

Hustler Three Bag Catcher 48"/54"/60"/66"/72" Decks Operator's Manual



••••••••

Hustler Turf Equipment

•••••

P.O. Box 7000

•••

Hesston, Kansas

•

67062-2097

Table of Contents

General Information	1-1
Safety Precautions.	2-1
Assembly Instruction	3-1
Operation	4-1
Maintenance & Storage	5-1
Parts List	6-1

GENERAL INFORMATION

To the new owner

The purpose of this manual is to assist owners and operators in maintaining and operating the Hustler Three Bag Catcher. Please read it carefully; information and instructions furnished can help you achieve years of dependable performance.

Using this manual

General operation, adjustment and maintenance guidance is outlined for both the experienced and novice Hustler user. Operating conditions vary considerably and cannot all be addressed individually. Through experience, however, operators should find no difficulty in developing good operating skills suitable to most conditions.

Directions used in this manual, for example RIGHT or LEFT, refer to directions when seated on mower facing forward, unless otherwise stated.

Photographs and illustrations used were current at the time of printing, but subsequent production changes may cause your machine to vary slightly in detail. Hustler Turf Equipment reserves the right to redesign and change the machine as deemed necessary, without notification. If a change has been made to your machine which is not reflected in this operator's manual, or the parts manual, see your Hustler dealer for current information and parts.

Warranty registration

Your Hustler Dealer must register the unit on-line within **ten (10) days** following date of purchase to validate your warranty protection. As the new equipment owner, you should confirm that your Hustler Dealer has registered your mower with Hustler Turf Equipment.

Be sure to register the mower plus each attachment that

displays a model and serial identification number plate with Hustler Turf Equipment.

IMPORTANT: Any unauthorized modification, alteration, or use of non-approved attachments voids the warranty and releases Hustler Turf Equipment from any liability arising from subsequent use of this equipment. Do not use or operate any attachment not approved by Hustler Turf Equipment.

Parts and service

Use original Hustler replacement parts only. These parts are available through your local Hustler dealer. To obtain prompt, efficient service, always provide the following information when ordering parts:

1. Correct part description and number, as given in the parts manual supplied with your owner's packet.
2. Correct model number.

All warranty repair and service must be handled through an authorized Hustler dealer. Arrangements should be made through your local service center.

Accessories

Part Number	Description
114536	Catcher wall mount

SAFETY PRECAUTIONS



This safety alert symbol is used to call attention to a message intended to provide a reasonable degree of PERSONAL SAFETY for operators and other persons during the normal operation and servicing of this equipment.

DANGER – denotes immediate hazards which WILL result in severe personal injury or death.

WARNING – denotes a hazard or unsafe practice which COULD result in severe personal injury or death.

This manual uses two other words to highlight information. **IMPORTANT** calls attention to special mechanical information and **NOTE**: emphasizes general information worthy of special attention.

All operators should read this manual and be instructed about safe operating and maintenance procedures. This is the owner's responsibility.

Improper use or maintenance by the operator or owner can result in injury. To reduce the potential for injury, comply with these safety instructions and always pay attention to the safety alert ▲ symbol, which means DANGER or WARNING - "personal safety instructions." Failure to comply with the instructions may result in personal injury or death.

Incorrect usage of this machine may result in severe injury. Personnel operating and maintaining it should be trained in the proper use and should read the manuals completely and thoroughly before attempting to set-up, operate, adjust, or service this machine.

It is the **owner's responsibility** to make certain that the operators and mechanics read and understand this manual. It is also the **owner's responsibility** to make certain that the operators and mechanics are qualified and physically able individuals, properly trained in the operation of this equipment. All operators and mechanics must become familiar with the safe operation of the equipment, operator controls and safety signs.

Never let children or untrained people operate or service the equipment. Local regulations may restrict the age of the operator.

The owner/user can prevent and is responsible for accidents or injuries occurring to themselves, other people or property.

The owner should also ensure that the operator/mechanic know that they are responsible for their own safety as well as the safety of other persons within the vicinity. **Remember**, the operator is responsible for accidents or hazards occurring to other people or their property.

- ▲ Evaluate the terrain to determine what accessories and attachments are needed to properly and safely perform the job. Only use accessories and attachments approved by the manufacturer.
- ▲ Always stop on level ground, disengage deck clutch, place steering control levers in the park brake position, stop mower's engine and remove ignition key before leaving operator's seat for any reason including emptying the catcher bags or unclogging the chute.
- ▲ Always be aware of any obstructions, especially small children, when backing or unloading the bags.
- ▲ Always keep safety shields and covers in place, except for servicing.
- ▲ Never work on mower deck when the mower's engine is running.
- ▲ Never operate machine with bagger lid in the raised position except for unloading.
- ▲ Never attempt high speed maneuvering in crowded or congested areas.
- ▲ Always operate with complete catcher system, mulching system or side discharge chute in place and in the lowest position.
- ▲ Always keep clear of the mower blades and attachments during their operation.
- ▲ Turn off blades when not mowing.
- ▲ Stop the engine before removing the grass catcher or unclogging the discharge chute. Never clear the discharge chute with the engine running. Turn off the engine and be sure the blades have stopped before cleaning. Use a stick to clear a plugged discharge area. **Never use your hand!**
- ▲ **Clean flammable material from machine. Prevent fires by keeping engine compartment, exhaust area, battery, fuel line, fuel tank and operator's station clean of accumulated trash, grass clippings, and other debris. Always clean up spilled fuel and oil.**
- ▲ Grass collection system components are subject to wear, damage and deterioration, which could expose moving parts or allow objects to be thrown. Frequently check components and replace with manufacturer's recommended parts when necessary.
- ▲ Never direct discharged material toward anyone. Avoid discharging material against a wall or obstruction. Material may ricochet back towards the operator. Always disengage the blades and wait for them to stop before crossing gravel drives, walks or roads.

WARNING: Thrown objects!



Part Number 601624

- Never operate the mower deck with side deflector damaged, altered, removed or in raised position, except when the entire grass catcher attachment or mulching system is being used.

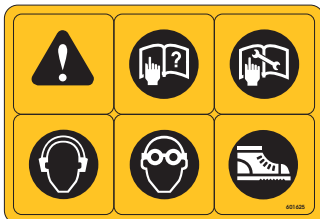


Part Number 601837

**DANGER:
Rotating blades, pulleys & belts**

- Keep hands, feet and clothing away.
- Keep shields or covers in place while machine is in operation.

Part Number 602758



- Read Owner's Manual before attempting to operate this machine.
- Wear ear protection, eye protection and safety shoes when operating this equipment

Part Number 602757



**DANGER:
Rotating impeller**

- Keep hands, feet and clothing away.
- Keep shields or covers in place while machine is in operation.
- Stop engine, remove ignition key.
- Engage park brake.
- Use a probe to clear debris from blower assembly. Remove blower chute to clear debris from chute.
- Never engage mower deck unless the entire grass catcher attachment is properly installed.

ASSEMBLY INSTRUCTION

These instructions apply to the assembly of the Hustler Three Bag Catcher to a Hustler 48", 54", 60", 66" or 72" mower.

It is intended that these units be installed by trained Hustler service personnel. If additional assistance is required, contact the Hustler Customer Service Department.

Directions given in these instructions, for example left and right, refer to direction while seated on the mower.

Before proceeding, read thru the following instructions to familiarize yourself, while at the same time identify and inventory kit parts supplied.

Unpack and inspect all parts. Notify carrier of any shipping damages immediately.

Packing list - 930446 Catcher

Part No.	Description	Qty
550811	Blower assembly	1
550835	Frame assembly	1
550837	X-ONE Frame adapter	1

Packing list - 930453 Catcher

Part No.	Description	Qty
550811	Blower assembly	1
550835	Frame assembly	1
550836	Super Z Frame adapter	1

Deck adapter kits

The following adapter kits must be used when mounting the Three Bag Catcher to a particular deck.

Deck size	Adapter Kit P/N
48" (X-ONE)	113900
54" (X-ONE)	113901
X-ONE with 60"	113902
Super Z with 60"	113903
66" (Super Z)	113904
72" (Super Z)	113905

Mower deck preparation

1. Park the mower on a flat surface. Always place the deck clutch switch in the disengaged position, place the steering control levers in the park brake position and shut off the ignition switch and remove the key from the switch. Disconnect the negative battery cable.
2. **48"/54" decks only** – Remove the discharge chute and torsion spring.
60"/66"/72" decks only – Remove the right side pulley

cover, discharge chute, and torsion spring.

NOTE: Retain these parts as they will be re-installed when the Catcher is removed.

3. Release the deck drive belt tension.

48"/54" decks only – Remove the existing spindle bolt and pulley from the center blade spindle.

60"/66"/72" decks only – Remove the existing spindle bolt and pulley from the right side blade spindle.

All decks – Replace the pulley with the double pulley and place the new cup washer between the head of the new bolt and the drive pulley. Thread the cup washer and bolt assembly into the spindle shaft. Torque bolt to 118 ft.-lbs. Refer to Figure 3-1, Figure 3-2, Figure 3-3, Figure 3-4 or Figure 3-5.

NOTE: The Super Z with a 60" deck will require that two additional spacers be added to the spindle assembly underneath the double pulley. Figure 3-3

4. Attach the deck blowout baffle to the underneath side of the deck. Refer to Figure 3-1, Figure 3-2, Figure 3-3, Figure 3-4 or Figure 3-5.

NOTE: This baffle replaces the existing right side adjustable baffle provided with the deck.

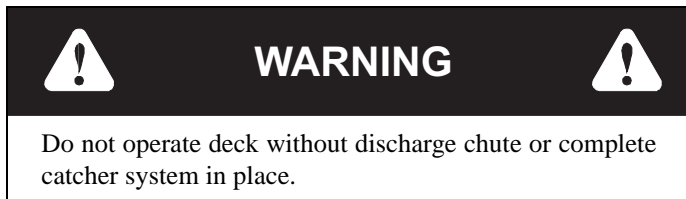
NOTE: The blowout baffle is most useful in dry, dusty conditions, particularly when picking up leaves. In other conditions, the adjustable baffle, supplied with the deck, may provide better cut quality and dispersion than the blowout baffle.

5. Attach the blower baffle to the deck. Refer to Figure 3-1, Figure 3-2, Figure 3-3, Figure 3-4 or Figure 3-5.
6. Assemble the blower mount to blower assembly. Refer to Figure 3-1, Figure 3-2, Figure 3-3, Figure 3-4 or Figure 3-5.

NOTE: The 48"/54" blower mount has two sets of holes. Use the rear set of holes when attaching to a 48" deck. Use the front set of holes when attaching to a 54" deck. Figure 3-1

7. Attach the blower assembly to the deck by inserting the rod through the discharge chute bracket and blower mount and secure with nut. Refer to Figure 3-1, Figure 3-2, Figure 3-3, Figure 3-4 or Figure 3-5.
8. Place the deck drive belt around the lower pulley of the double pulley. Confirm that the belt is properly routed and seated on all pulleys and idlers. Re-tension the deck drive belt per the tensioning instructions found in the mower's *General Service Manual*.
9. Install and route the blower belt around the blower pulleys and the upper pulley on the double pulley. This belt is self tensioning. Figure 3-6 or Figure 3-7
10. **48"/54" decks only** – Remove the lower nut from the right front deck chain attaching bolt. Slide the blower belt cover mount bracket onto the bolt and re-install the nut and tighten. Figure 3-1
11. Attach the blower belt cover. Refer to Figure 3-1, Figure

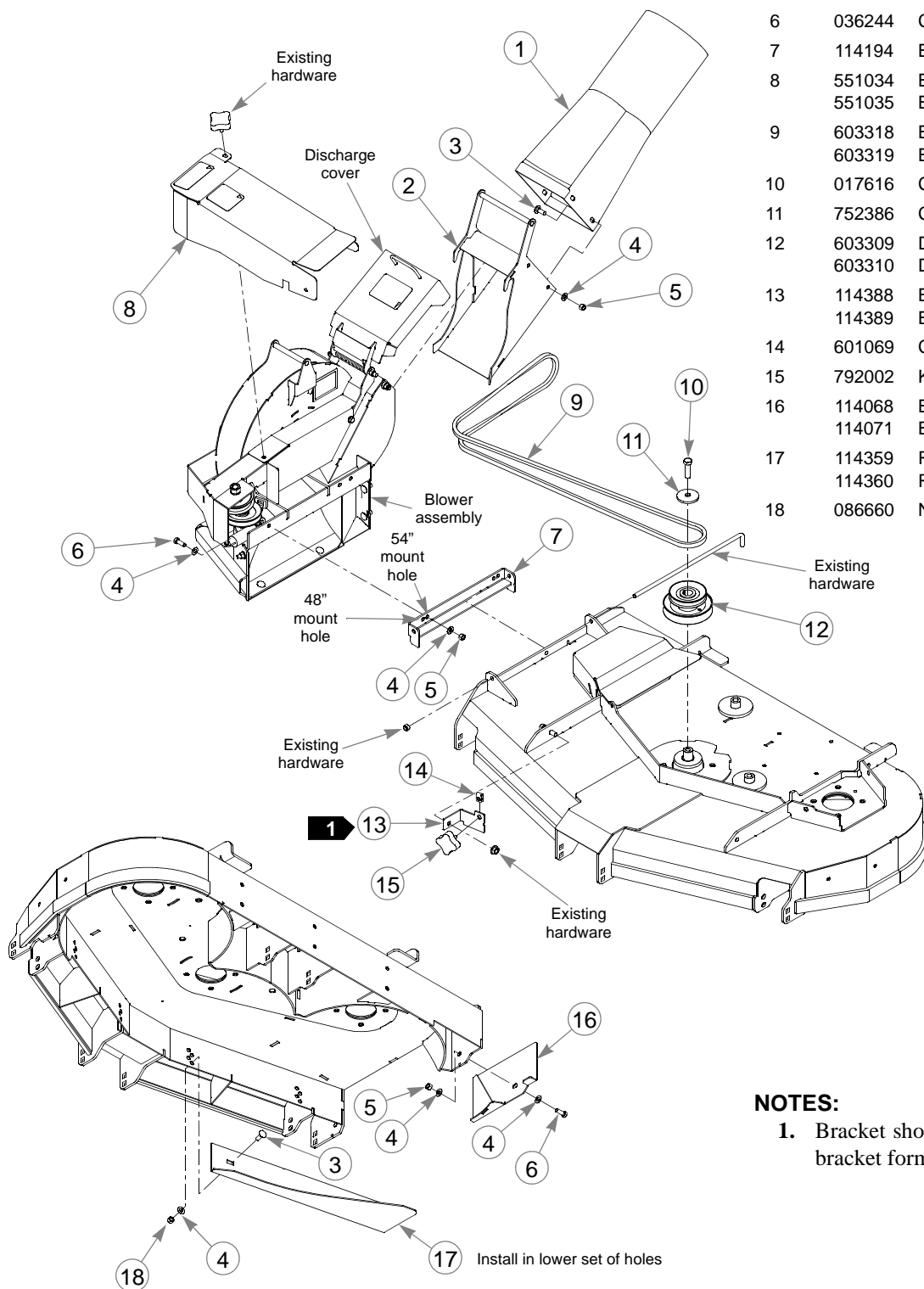
3-2, Figure 3-3, Figure 3-4 or Figure 3-5.



12. Attach the outlet adapter to the blower outlet tube. Refer to Figure 3-1, Figure 3-2, Figure 3-3, Figure 3-4 or Figure 3-5

113900 (48") & 113901 (54") Adapter Assembly

INDEX NO.	PART NO.	DESCRIPTION
1	603213	BLOWER OUTLET TUBE
2	114066	OUTLET ADAPTER
3	025395	CB .375-16 X 1.00 G5 ZNY
4	767954	FW .406 X .812 X .060 SAE
5	054502	NT .375-16 HX GRD 5 ZNY
6	036244	CS .375-16 X 1.000 HX G5
7	114194	BLOWER MOUNT
8	551034	BLOWER BELT COVER, 48"
	551035	BLOWER BELT COVER, 54"
9	603318	BELT, A 97.0" EL, 48"
	603319	BELT, A 103.0" EL, 54"
10	017616	CS .500-13 X 1.750 HX G5
11	752386	CW .515 X 2.25 X .204 BLK
12	603309	DOUBLE PULLEY, 48"
	603310	DOUBLE PULLEY, 54"
13	114388	BELT COVER BRACKET, 48"
	114389	BELT COVER BRACKET, 54"
14	601069	CN .312-18 X .200 MAX THK
15	792002	KNOB 5/16-18 X 3/4"
16	114068	BLOWER BAFFLE, 48"
	114071	BLOWER BAFFLE, 54"
17	114359	RH BLOWOUT BAFFLE, 48"
	114360	RH BLOWOUT BAFFLE, 54"
18	086660	NT .375-16 HXZY NL



NOTES:

1. Bracket shown for 48" deck. 54" deck bracket formed opposite.

Figure 3-1

113902 (60" X-ONE) Adapter Assembly

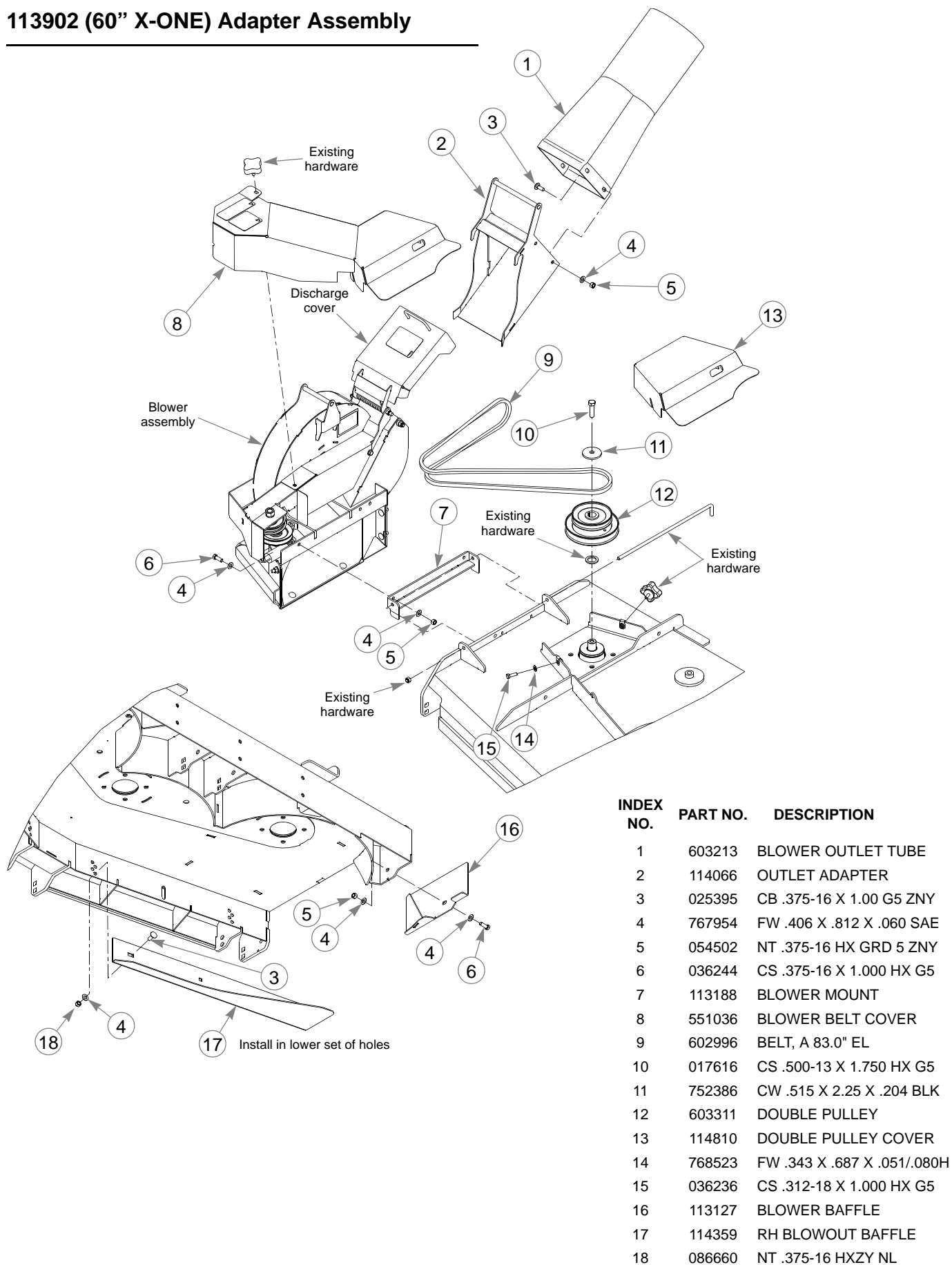
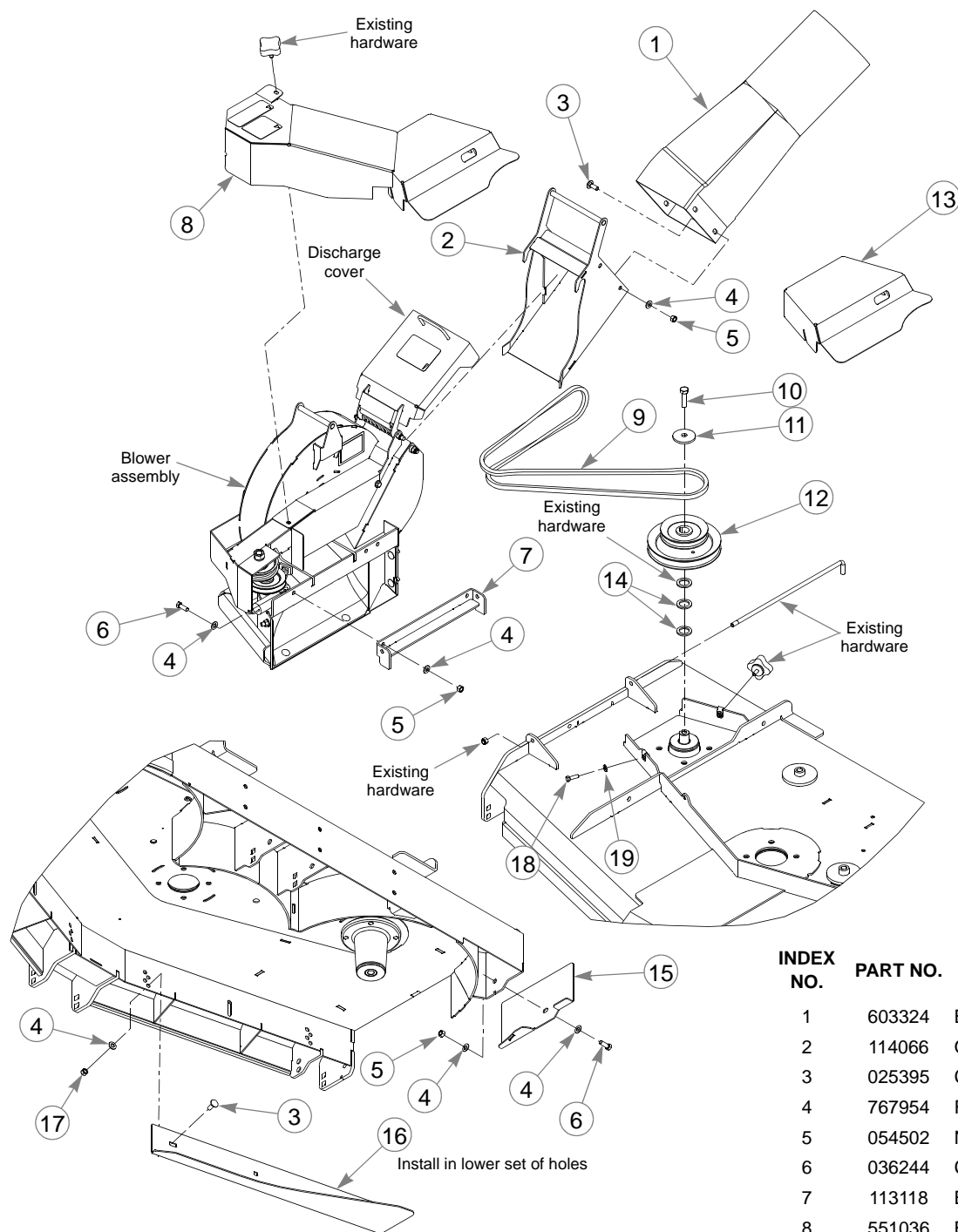


Figure 3-2



113903 (60" Super Z) Adapter Assembly

INDEX NO.	PART NO.	DESCRIPTION
1	603324	BLOWER OUTLET TUBE
2	114066	OUTLET ADAPTER
3	025395	CB .375-16 X 1.00 G5 ZNY
4	767954	FW .406 X .812 X .060 SAE
5	054502	NT .375-16 HX GRD 5 ZNY
6	036244	CS .375-16 X 1.000 HX G5
7	113118	BLOWER MOUNT
8	551036	BLOWER BELT COVER
9	602996	BELT, A 83.0" EL
10	017616	CS .500-13 X 1.750 HX G5
11	752386	CW .515 X 2.25 X .204 BLK
12	602914	DOUBLE PULLEY
13	114810	DOUBLE PULLEY COVER
14	045765	FW 1.030 X 1.500 X .134 ZN
15	113127	BLOWER BAFFLE
16	114361	RH BLOWOUT BAFFLE
17	086660	NT .375-16 HXZY NL
18	036236	CS .312-18 X 1.000 HX G5
19	768523	FW .343 X .687 X .051/.080H

Figure 3-3

113904 (66") Adapter Assembly

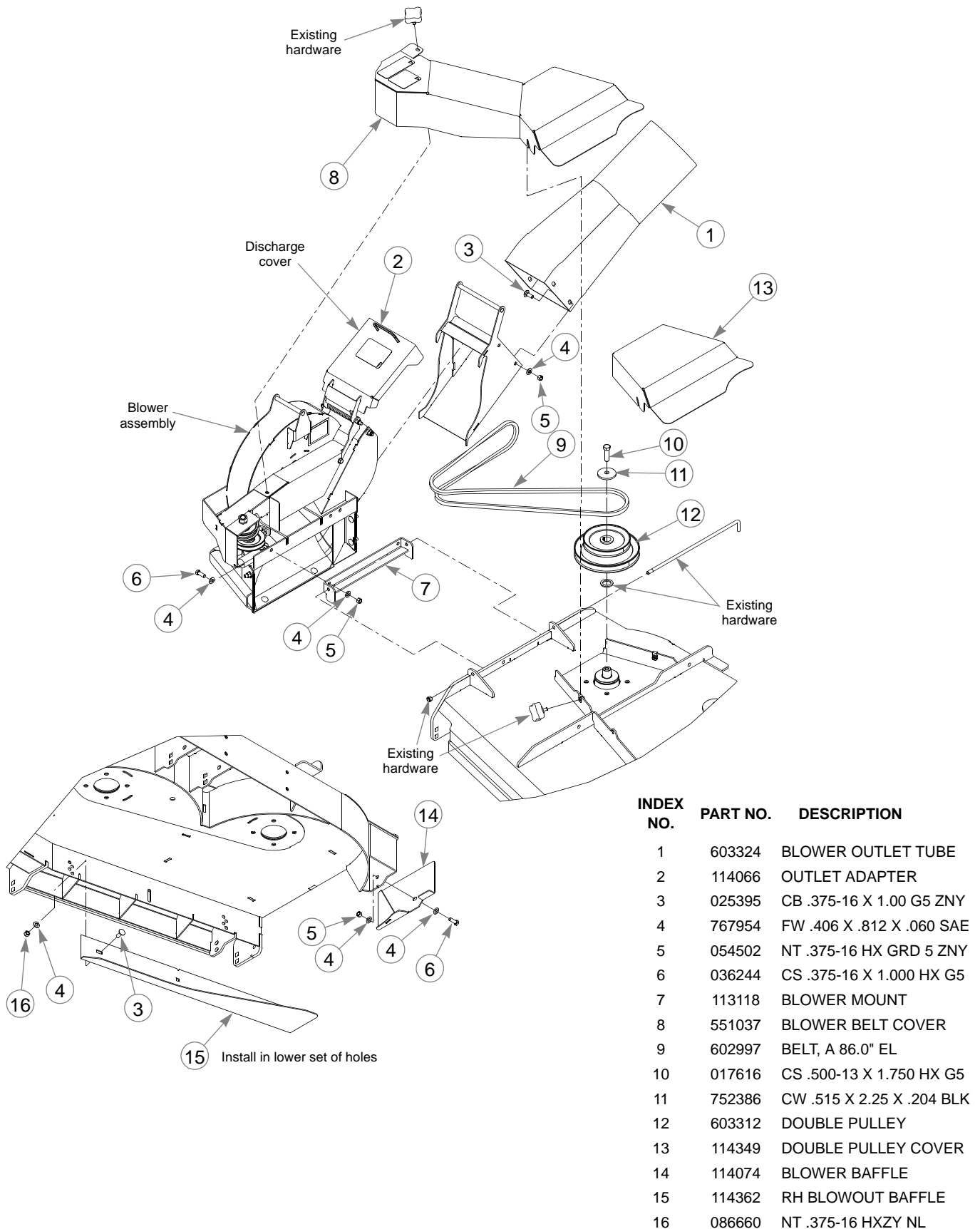


Figure 3-4

113905 (72") Adapter Assembly

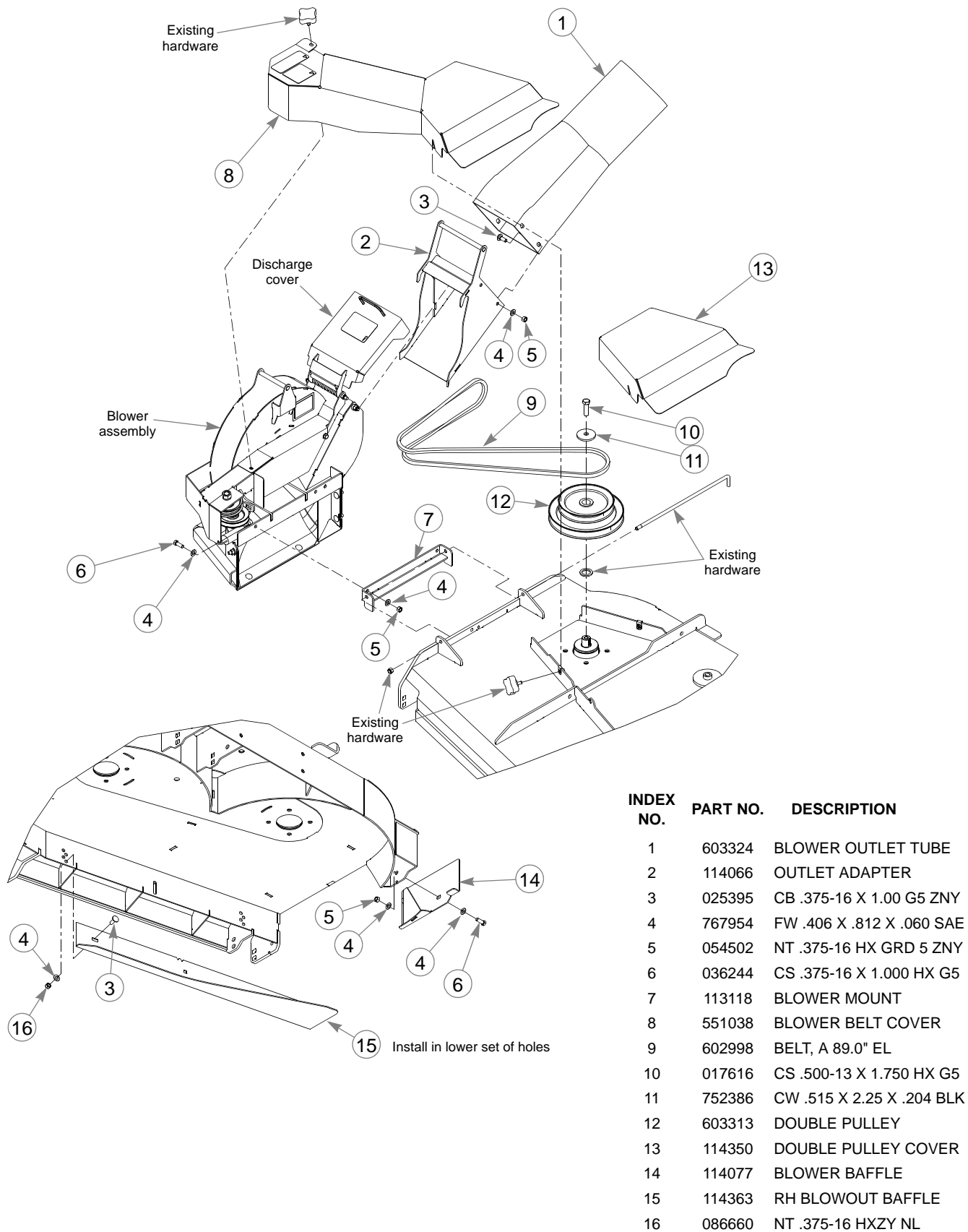


Figure 3-5

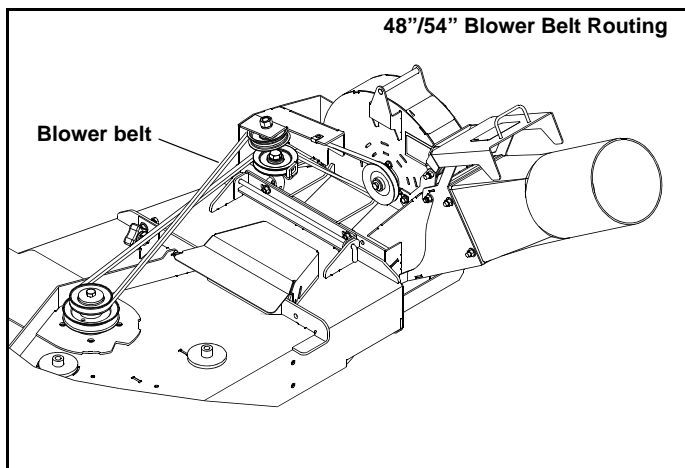


Figure 3-6

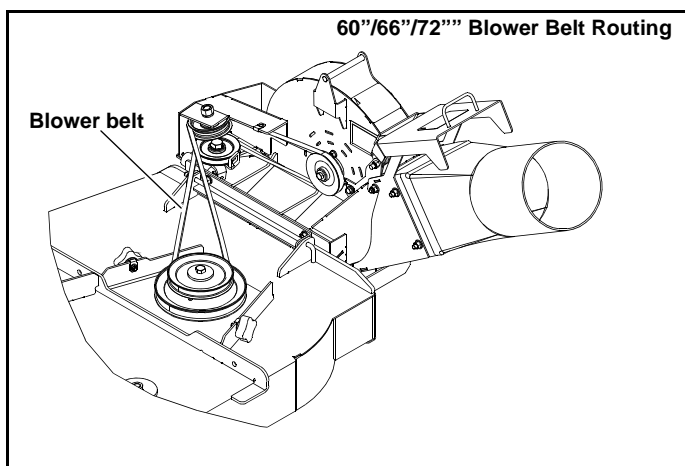


Figure 3-7

Mower Preparation



WARNING



Allow engine and muffler to cool before assembling the unit to the mower.

1. Remove the two cap screws that attach the left side of the rear bumper to the mower frame. Figure 3-13
2. Attach the left side mount to the rear bumper and the mower frame using the hardware shown. Figure 3-13
3. Repeat steps 1 & 2 for the opposite side. Figure 3-13
4. Attach the bag shield to the left side mount as shown. Figure 3-13
5. Attach the pivot mount assembly to the left and right mounts as shown. Figure 3-13
6. Tighten all hardware.

Final Connection

1. Insert the hood inlet tube into the opening in the hood assembly and bolt in place. Make sure the tube is orientated per the illustration. Figure 3-8

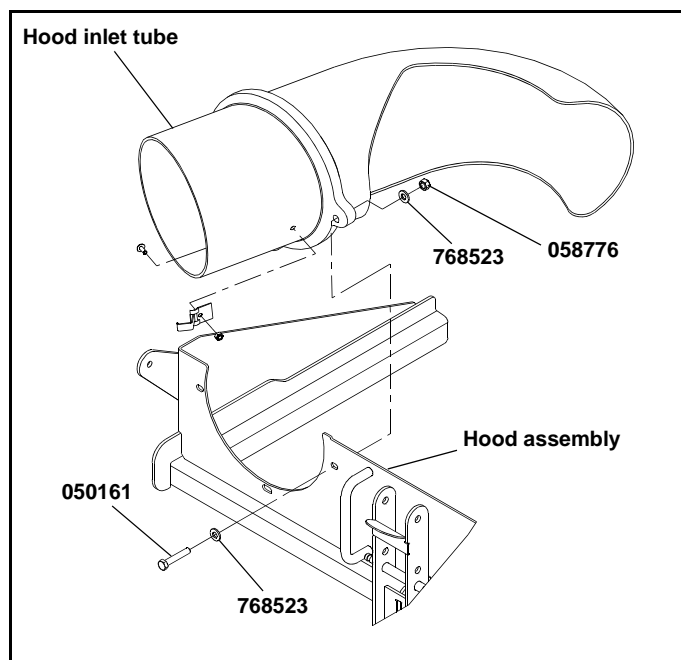


Figure 3-8

2. Lift the hood assembly using the lift handles. Figure 3-9

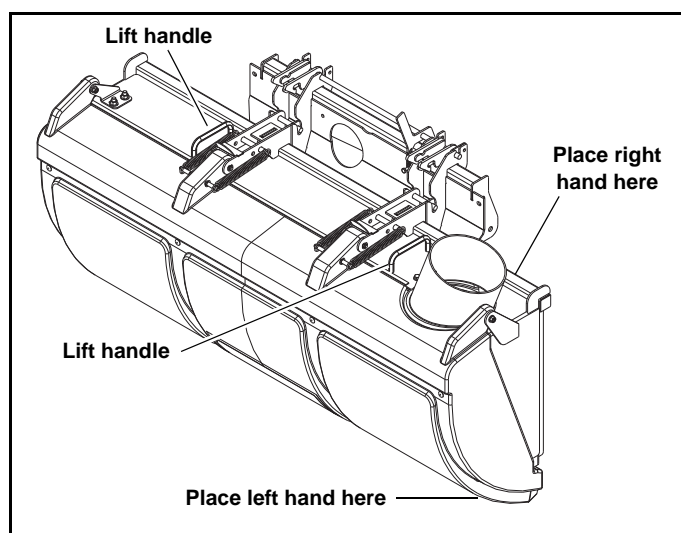


Figure 3-9

3. Slide the hood assembly's lower pivot pins into the slots in the pivot mount assembly. Figure 3-11
4. Place your hands on the hood assembly as indicated in Figure 3-9. By lifting with your left hand and pushing down with your right hand, pivot the lid assembly up 90° and over until the upper pins latch in the upper hood

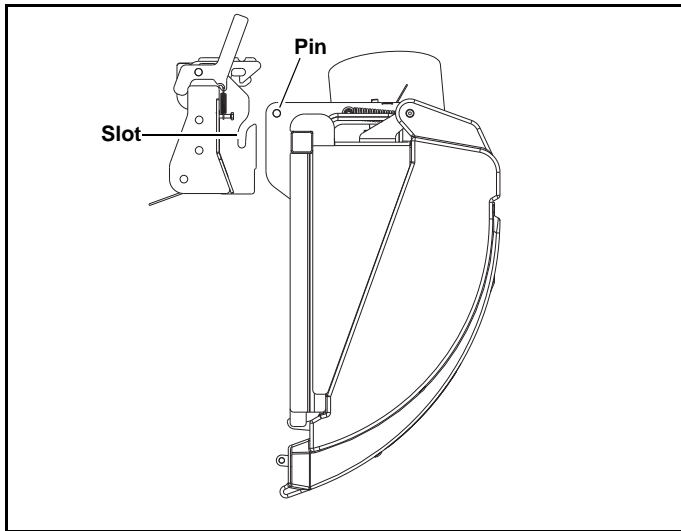


Figure 3-10

latch. Figure 3-11

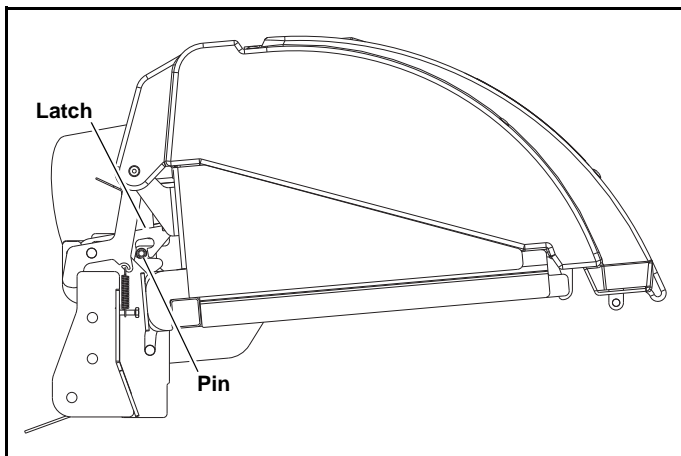


Figure 3-11

5. Raise the discharge cover on the blower housing. Slide the outlet adapter into place on the blower outlet. Secure in place with the discharge cover latching the rod handle of the outlet adapter. Refer to Figure 3-1, Figure 3-2, Figure 3-3, Figure 3-4 or Figure 3-5
6. Slide one end of the flex tube onto the blower outlet tube. Figure 3-12
7. Slide the other end of the flex tube over the catcher hood elbow chute and secure in place with the clamp. Figure 3-

12

8. Locate the holes that are located under the step tread on the counter weight mount. Using the holes as a guide cut the step tread away from the holes to allow the mounting bolts to go through. Figure 3-14
9. Locate the holes that are located under the step tread on the mower frame. Using the holes as a guide cut the step tread away from the holes to allow the mounting bolts for the counter weight mount to go through. Figure 3-14
10. Attach the counter weight mount to the front of the mower. Figure 3-14
NOTE: When attaching the counter weight mount to a 48" deck, the inside set of holes is used for the u-bolts to attach to the front wheel arms.
11. Slide the weights vertically onto the mount and lock in place using the weight lock plate and tighten knobs. Figure 3-14
12. Place the bags in the catcher assembly and close the catcher hood. Make sure the catcher lid latches in place.
NOTE: Make sure that the non-mesh side of the bag is towards the engine.
13. Reconnect the negative battery cable.
14. Increase the mower's drive tire's pressure to 16 psi (110 KPa). The drive tires will need to have the air pressure increased to support the additional weight of the catcher system and when grass clippings are in the bags.
NOTE: When the catcher system is removed the air pressure in the tires should be decreased to the normal operating range of 8 - 12 psi (55 - 83 KPa).

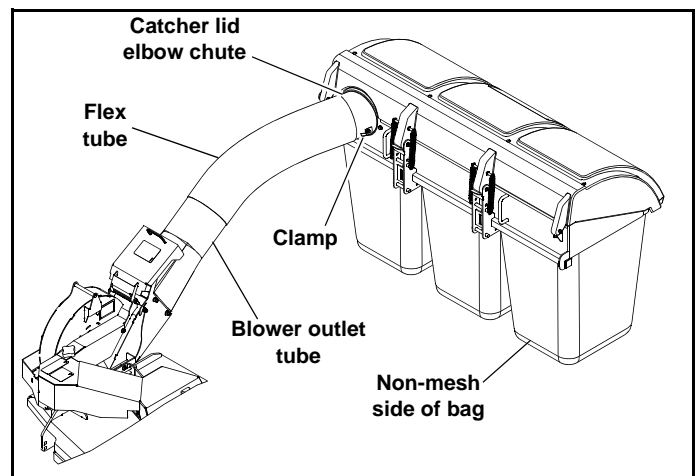
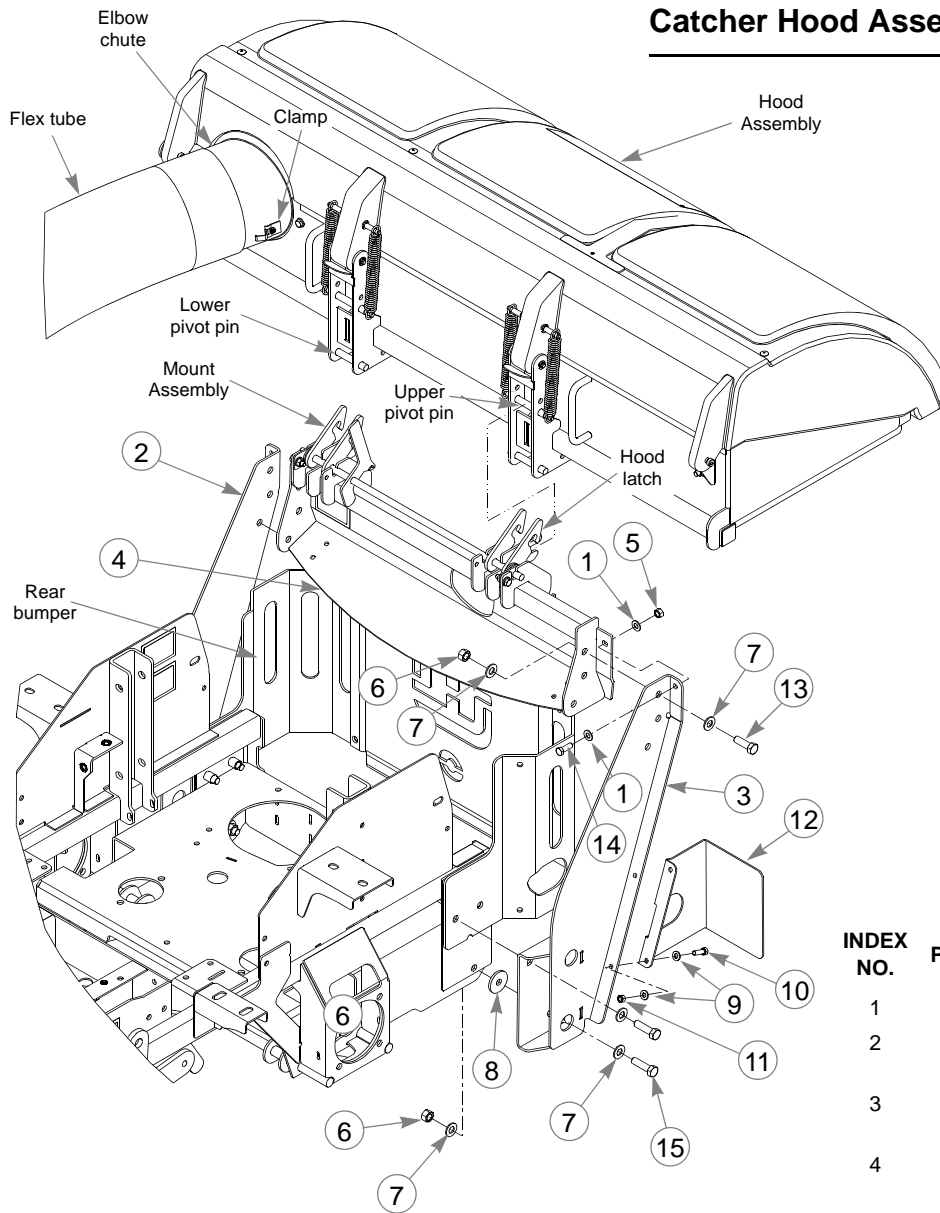


Figure 3-12

Catcher Hood Assembly



INDEX NO.	PART NO.	DESCRIPTION
1	767954	FW .406 X .812 X .060 SAE
2	114168	MOUNT, RS (X-ONE)
	113781	MOUNT, RS (SUPER Z)
3	114169	MOUNT, LS (X-ONE)
	113782	MOUNT, LS (SUPER Z)
4	551054	PIVOT MOUNT (X-ONE)
	551055	PIVOT MOUNT (SUPER Z)
5	054502	NT .375-16 HX GRD 5 ZNY
6	008193	NT .500-13 HX G5 ZNYC
7	767962	FW .531 X 1.063 X .090 SAE
8	008193	NT .500-13 HX G5 ZNYC
9	768523	FW .343 X .687 X .051/.080H
10	036236	CS .312-18 X 1.000 HX G5
11	034272	NT .312-18 HX G5 ZNYC
12	114259	BAG SHIELD
13	074252	CS .500-13 X 1.500 HX G5
14	036244	CS .375-16 X 1.000 HX G5
15	017616	CS .500-13 X 1.750 HX G5

Figure 3-13

Weight Assembly

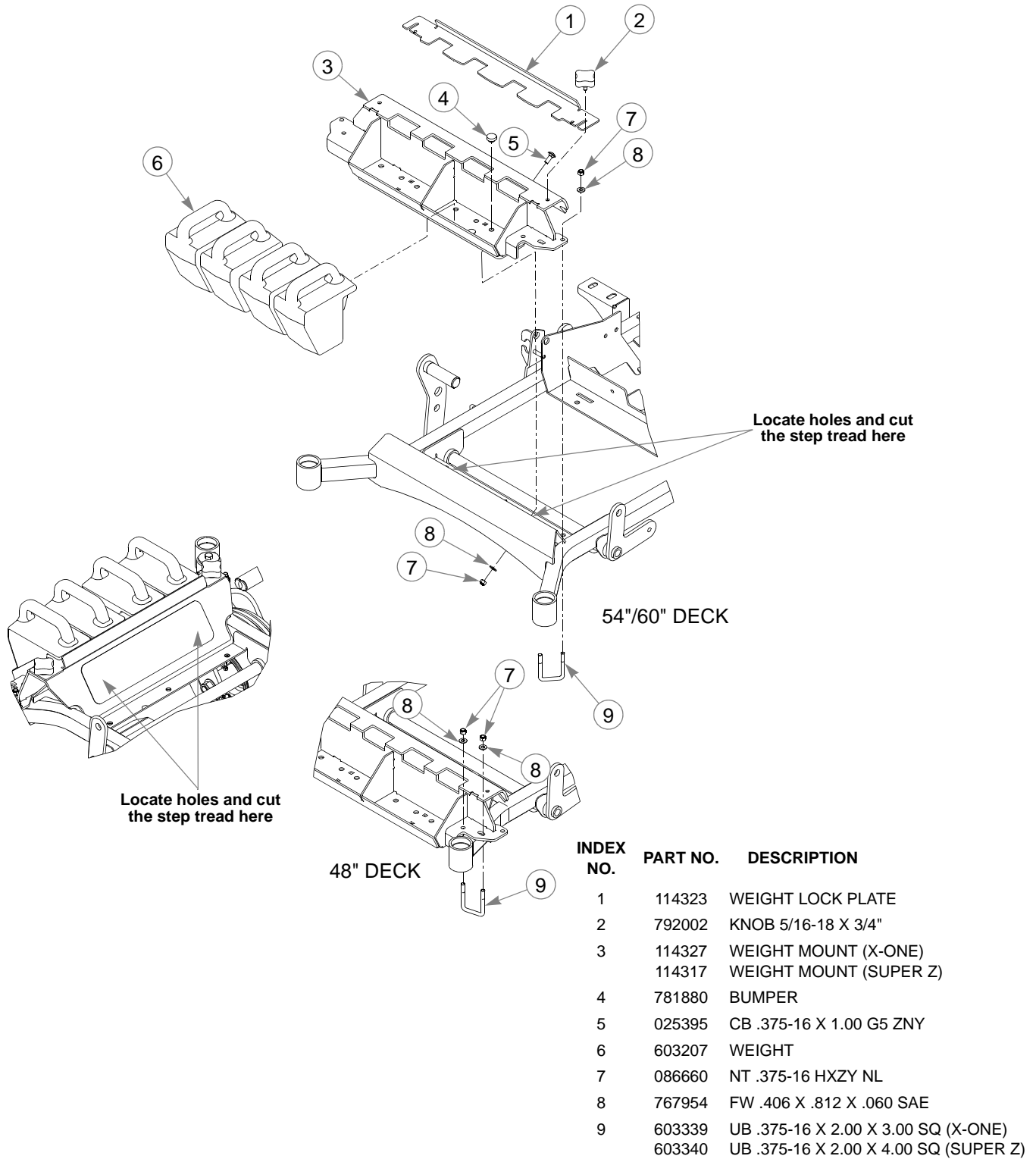


Figure 3-14

OPERATION

Vacuum Pickup and Collection

Follow normal mower start-up and operating procedures as outlined in the mower operator's manual. The blower will operate when the mower deck clutch switch is engaged. To stop the blower, return the deck clutch switch to the disengaged position.

Proceed to mow in the normal manner and occasionally glance at the flex tube. When the bags are full the speed of debris through the tube will decrease. When the bags are filled, move the deck clutch switch to the disengaged position and drive the machine to the unloading area.

It is best that the bags be unloaded before the discharge chute and flex tube areas become clogged. If clogging occurs, it will be necessary to clear the blower chute and flex tube areas of all material before starting to mow again.



WARNING



Make certain the engine is turned off, the steering control levers are in the park brake position and the ignition key is removed from the ignition switch and be sure blades have stopped before clearing the blower chute and flex tube areas.



WARNING



Never place hands or feet into the discharge area. The impeller is relatively close to the housing and will cause severe injury. Use a probe to clean debris from blower housing discharge area. The discharge cover must remain closed whenever the blower chute is removed.



WARNING



Never engage mower deck unless catcher flex tube is clamped in place on catcher lid elbow chute and inserted onto blower chute outlet tube.



WARNING



Prevent objects being thrown and the accumulation of grass clippings and other debris in engine compartment by NEVER operating mower deck unless:

- All bags are installed.
- Hood is lowered and latched.
- Flex tube is in place on the blower chute and on the catcher lid elbow chute and clamped.

Unloading the Catcher



WARNING



Park the unit on a level surface, disengage the deck clutch switch, place the steering control levers in the park brake position and shut the engine off. Remove the ignition key. Make certain the deck clutch switch is in the disengaged position before unloading.

Get off the mower. Pull on the catcher lid release lever. Raise the catcher lid, remove the bags and dump them. Figure 4-1

Return the bags to the catcher assembly, making sure that the non-mesh side of the bag is towards the engine and close the catcher lid. Make sure the catcher lid is latched. Figure 4-1.

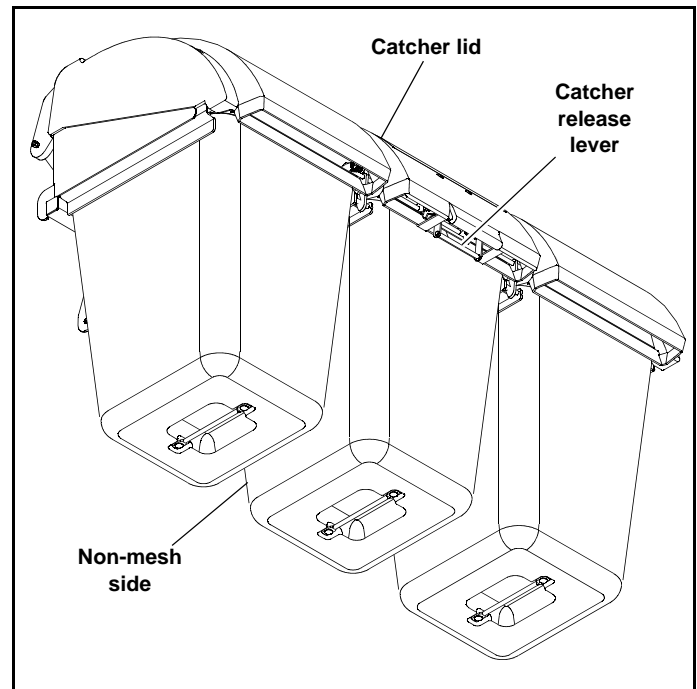


Figure 4-1

Converting to side discharge mode

Included with the catcher is a tall pulley cover. This is used when converting from catcher mode to side discharge mode.

To convert:

1. Park the mower on a flat surface. Turn engine off, place the steering control levers in the park brake position and remove the ignition key. Be sure blades have stopped before dismounting from the mower.
2. Remove the flex tube from the catcher lid elbow chute and blower outlet tube. Figure 4-2
3. Remove the blower outlet tube from the blower assembly. Figure 4-2
4. Remove the blower belt cover from the deck. Figure 4-2
5. Release the tension from the blower drive belt and remove it. Figure 4-3 & Figure 4-4

NOTE: It is not necessary to remove the double pulley on the deck spindle.

6. Remove the pin that connects the blower to the discharge chute bracket tabs and remove the blower housing. Figure 4-3 & Figure 4-4
7. Assemble the torsion spring, original discharge chute and pin to the bracket tabs. Make sure the torsion spring is assembled as shown so that it applies pressure to the discharge chute and keeps it in the down position. Figure 4-5
8. Remove the blower baffle and relace it with the right side adjustable baffle that was provided with the deck. Figure 3-1, Figure 3-2, Figure 3-3, Figure 3-4 & Figure 3-5
9. **60", 66" & 72" decks only** – Assemble the tall pulley cover (included with the adapter kit) to the deck. Figure 4-5
10. Remove the bags and lid assembly from the rear of the machine.

NOTE: It is not necessary to remove the catcher frame that is attached to the rear of the mower.

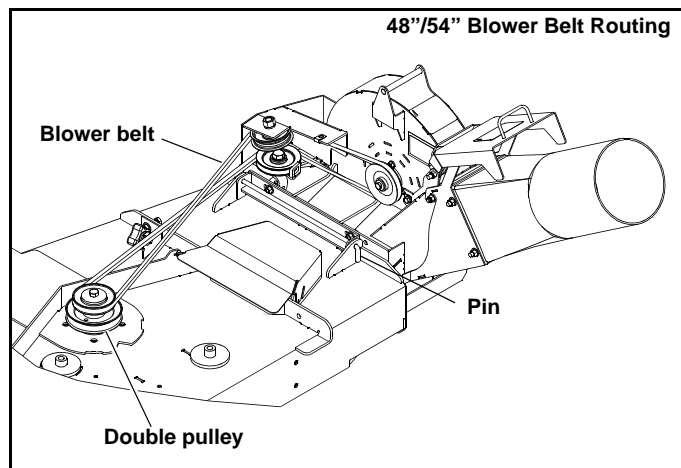


Figure 4-3

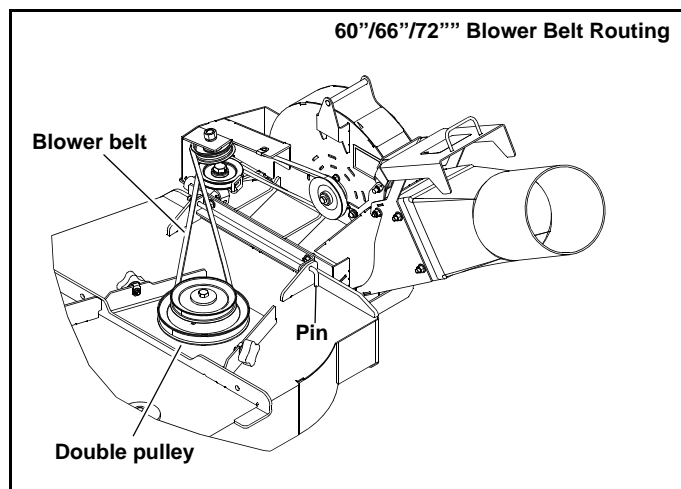


Figure 4-4

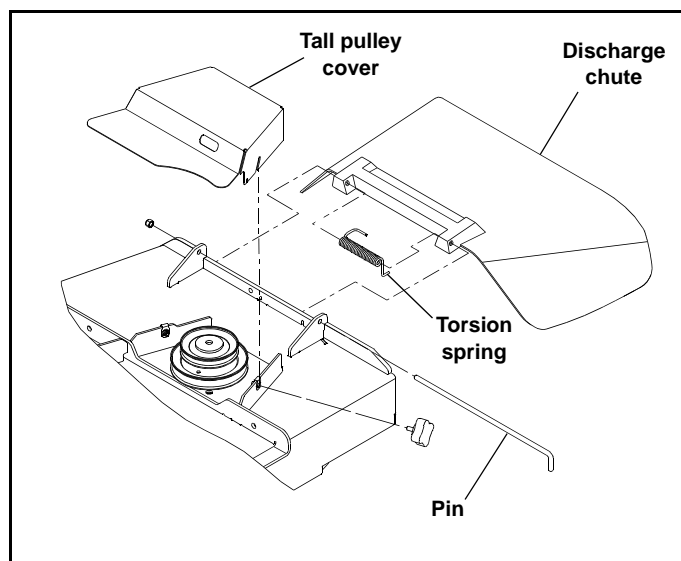


Figure 4-5

release the latches. Figure 4-6 & Figure 4-7

2. Allow the lid assembly to pivot down.
3. Using the lift handles lift the lid assembly out of the notches on the mount assembly. Figure 4-7

WARNING

Never operate the mower deck with side deflector damaged, altered, removed or in raised position, except when the entire grass catcher attachment or mulching system is being used.

WARNING

Always operate with complete catcher system, mulching system or side discharge chute in place and in the lowest position.

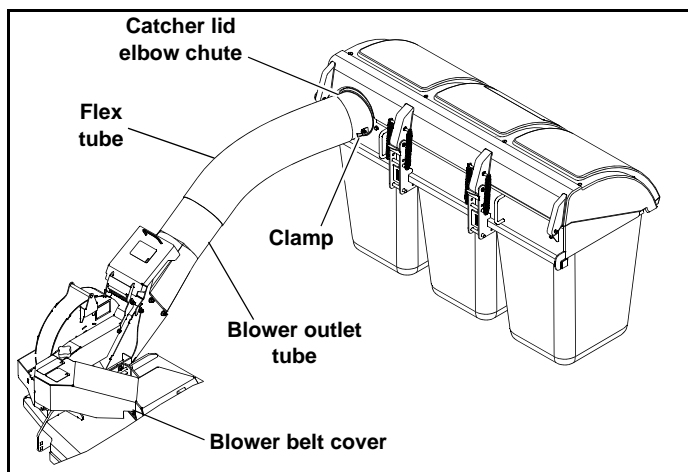


Figure 4-2

Removing the lid assembly

Use the following procedure when removing the lid assembly from the mower.

1. Lift the lid assembly slightly and push the release lever to

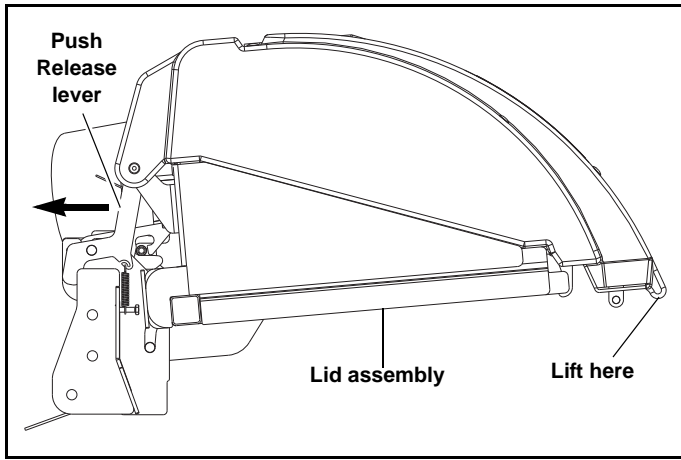


Figure 4-6

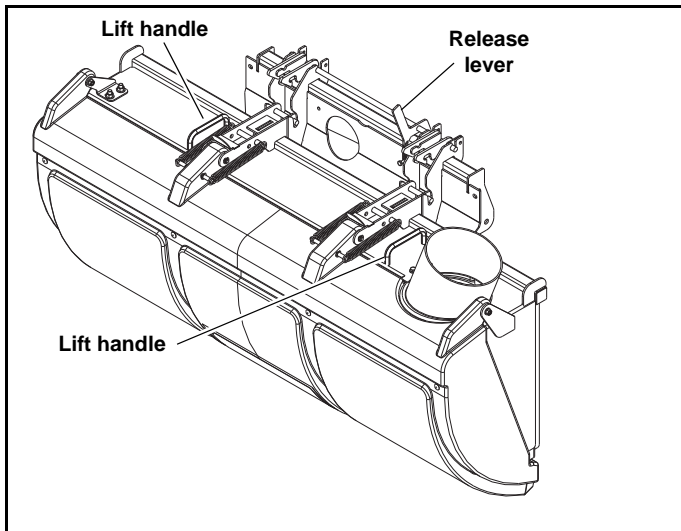


Figure 4-7

MAINTENANCE & STORAGE

Blower Housing and Transfer Tube Maintenance



WARNING



Never work on the blower assembly or mower deck when the engine is running.



WARNING



Clean flammable material from machine. Prevent fires by keeping engine compartment, top of deck, exhaust area, battery, hydraulic lines, fuel line, fuel tank and operator's station clean of accumulated trash, grass clippings, and other debris. Always clean up spilled fuel and oil.

The blower assembly, flex tube and blower outlet tube (Figure 5-1) should be kept clean and free of any accumulation of clippings or other obstructions. Occasional clogging may also occur when working in heavy or wet grass.



WARNING



Never place hands or feet into the blower chute. There is an impeller located inside the housing that will cause severe injury. Use a probe to clear debris from blower chute.



WARNING



Never operate the mower deck with side deflector damaged, altered, removed or in raised position, except when the entire grass catcher attachment or mulching system is being used.



WARNING



Prevent objects being thrown and the accumulation of grass clippings and other debris in engine compartment by NEVER operating mower deck unless:

- All bags are installed.
- Hood is lowered and latched.
- Flex tube is in place on the blower chute and on the catcher lid elbow chute and clamped.

To service the blower housing: remove the blower belt cover from the top of the deck and blower housing.

To service the flex tube, remove the tube from the unit. The

tube can be cleaned by using soapy water and washing the inside of the tube with a pressure washer. Rinse with water.

To clean the bags, hand wash with soap and water; rinse with clean water.

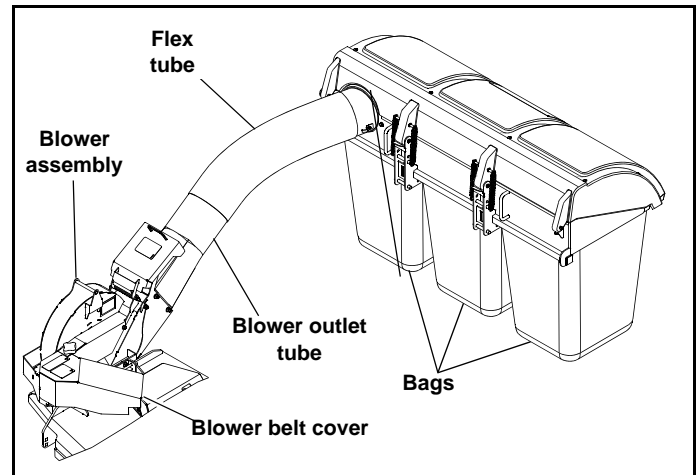


Figure 5-1

Blower drive belt

The blower drive belt (Figure 5-2 & Figure 5-3) is located under the blower belt cover. This belt is spring tensioned and should not need adjustment.

To inspect or replace the belt, remove the blower belt cover from the top of the deck and the blower housing.

When belt replacement becomes necessary, check the condition of the pulleys. Clean the grooves and check for excessive wear. A new belt should not run against the bottom of groove. If it does bottom out, the pulley needs replacing.

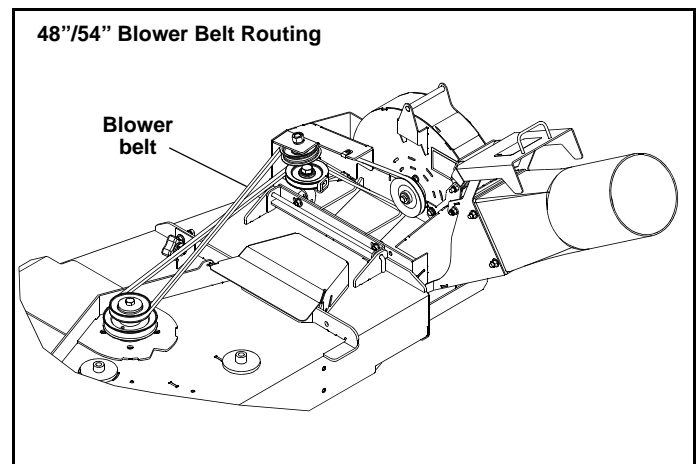


Figure 5-2

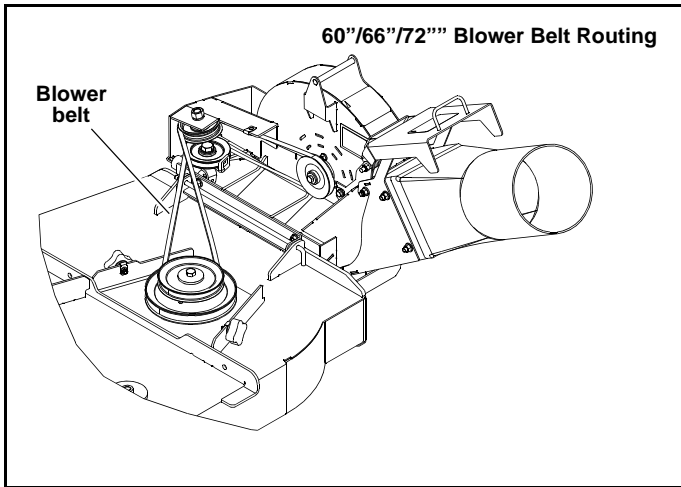




Figure 5-3

Blower impeller

The blower impeller shaft bearings do not require lubrication.


WARNING


Normal wear can cause the impeller and edges of the blower to become sharp. Wear gloves and use caution when servicing the blower.

Lid latch adjustment

If the lid latch does not hold the lid in place then the latch will need to be adjusted. The lid will need to be closed before the latch can be adjusted.

1. Loosen the hardware on the lid catch.
2. Adjust the lid catch until it fully engages on the latch assembly.
3. Tighten the hardware.
4. Test the latch by opening and letting the lid close freely. It should secure the lid in place. If not, repeat the previous steps.

Storage

When your mower is to set idle for a period of time, scrape and remove the grass material from inside the hood and clean the bags.

Check for loose or missing hardware, tighten or replace. Also check for badly worn or damaged parts, consider replacing them at this time. Touch up chipped paint areas, your dealer has aerosol spray paint available

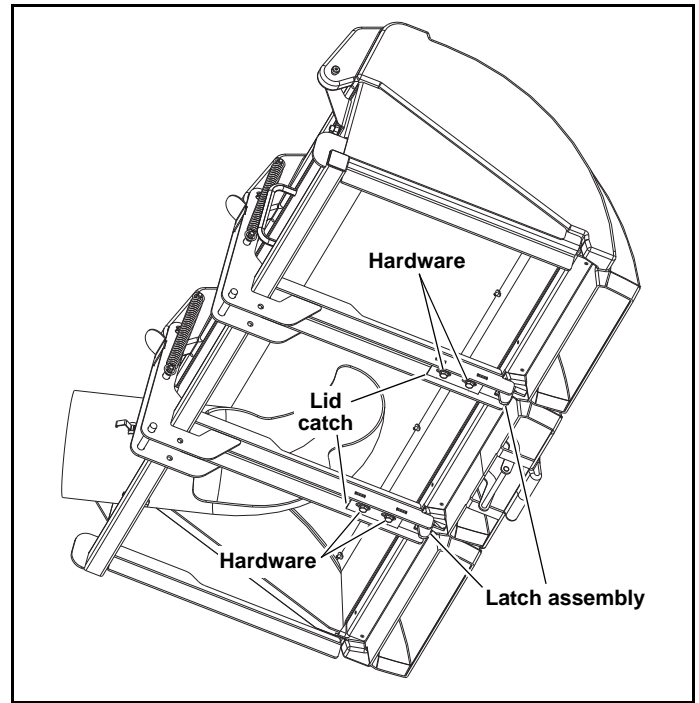
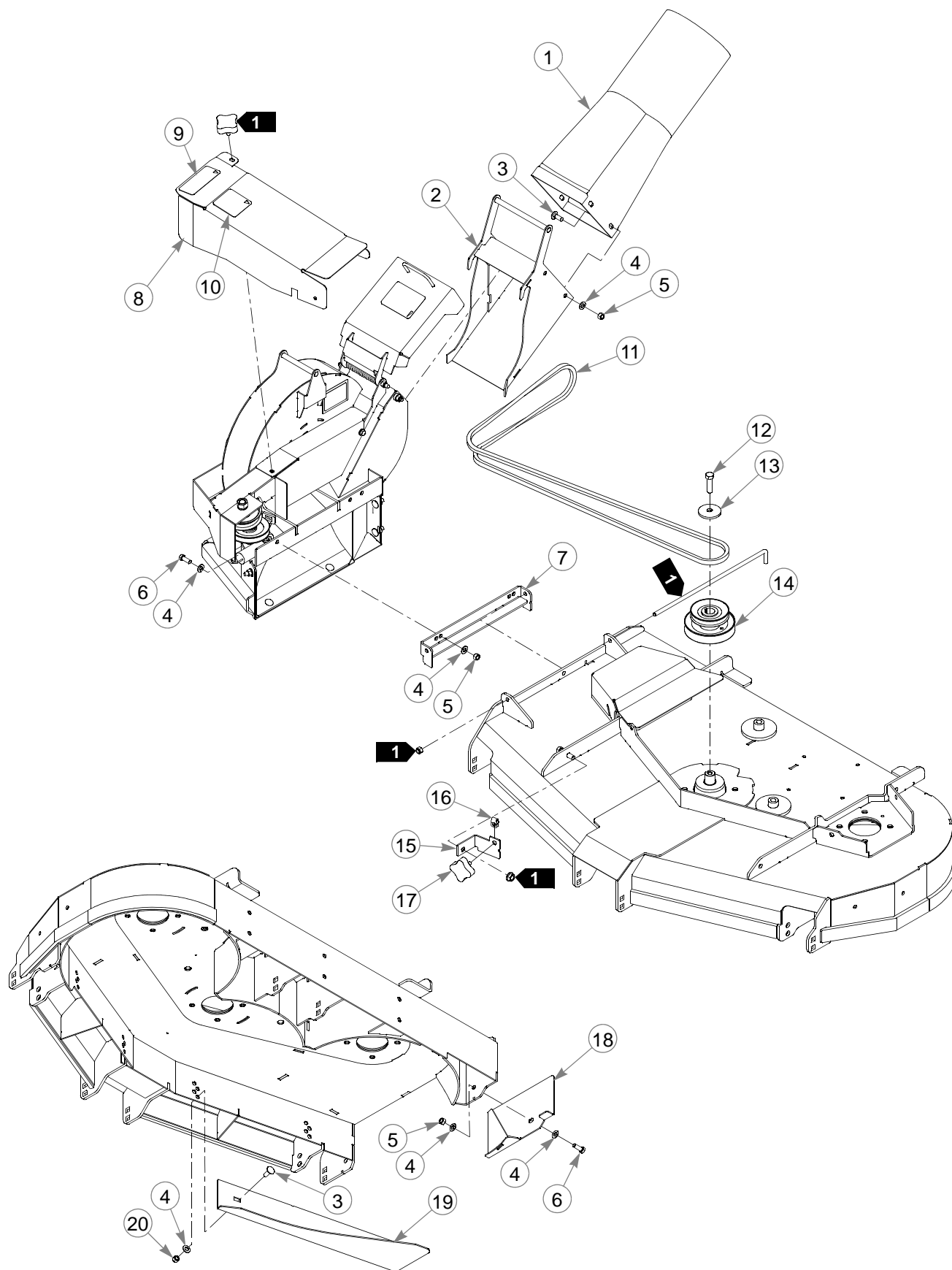


Figure 5-4

Parts List

48" Deck Adapter	6-2
54" Deck Adapter	6-4
60" X-ONE Deck Adapter	6-6
60" SZ Deck Adapter	6-8
66" Deck Adapter	6-10
72" Deck Adapter	6-12
550811—Z Blower F/A	6-14
550811—Z Blower F/A	6-16
550835—Catcher Frame F/A	6-18
550835—Catcher Frame F/A	6-20
550836—Catcher Frame Adapter	6-26
550836—Catcher Frame Adapter	6-28
550837—Catcher Frame Adapter	6-31
550837—Catcher Frame Adapter	6-33

48" Deck Adapter



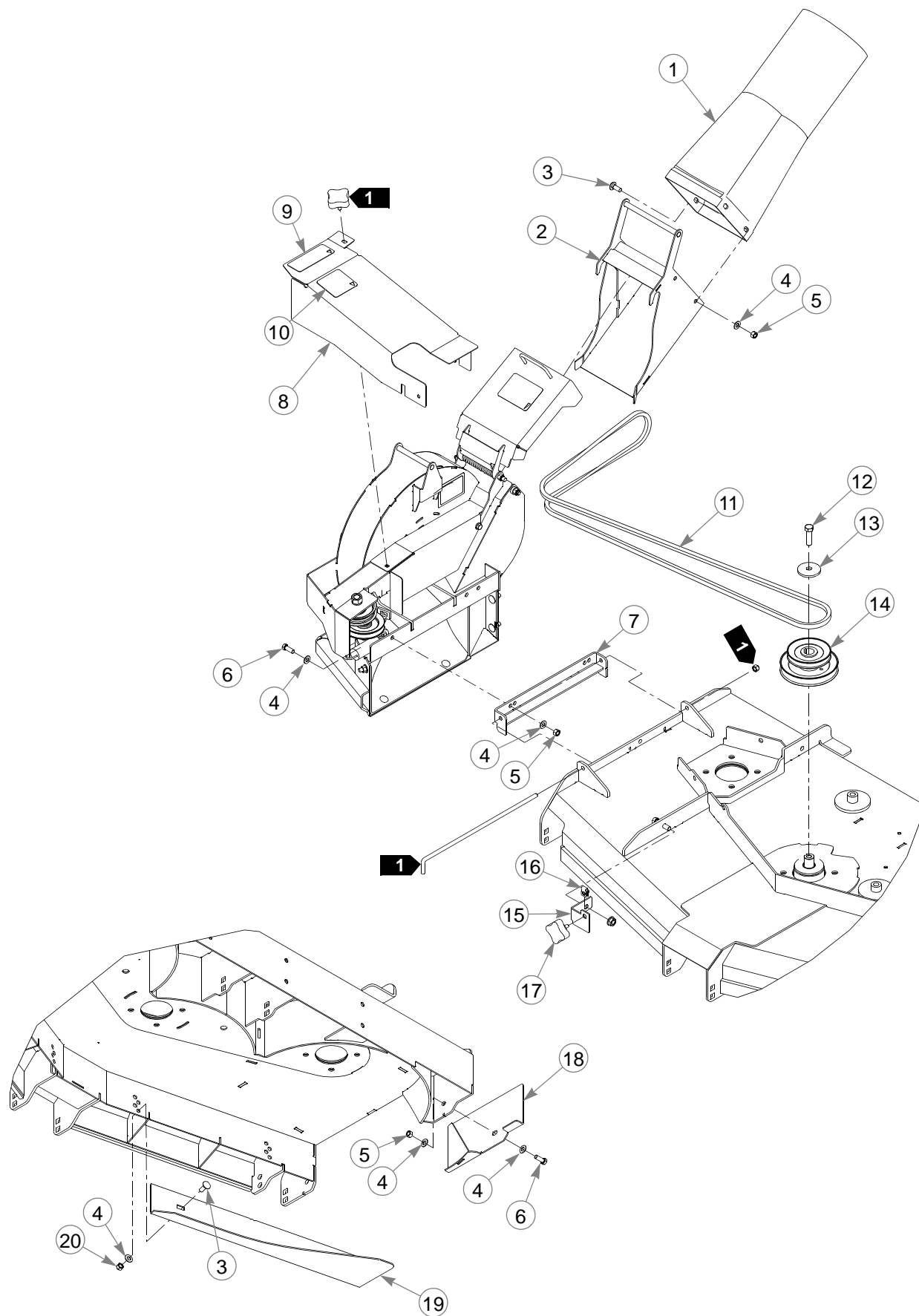
48" Deck Adapter

INDEX NO.	PART NO.	QTY.	DESCRIPTION
1	603213	1	BLOWER OUTLET TUBE
2	114066	1	OUTLET ADAPTER
3	025395	6	CB .375-16 X 1.00 G5 ZNY
4	767954	12	FW .406 X .812 X .060 SAE
5	054502	7	NT .375-16 HX GRD 5 ZNY
6	036244	3	CS .375-16 X 1.000 HX G5
7	114194	1	BLOWER MOUNT
8	551034	1	48" BLOWER BELT COVER W/ DECALS
9	601624	1	DISCHARGE CHUTE DECAL
10	601837	1	DECK DANGERS DECAL
11	603318	1	BELT, A 97.0" EL
12	017616	1	CS .500-13 X 1.750 HX G5
13	752386	1	CW .515 X 2.25 X .204 BLK
14	603309	1	48" DOUBLE PULLEY
15	114388	1	48" BELT COVER BRACKET
16	601069	1	CN .312-18 X .200 MAX THK
17	792002	1	KNOB 5/16-18 X 3/4"
18	114068	1	BLOWER BAFFLE, 48"
19	114359	1	RS 48" BLOWOUT BAFFLE
20	086660	2	NT .375-16 HXZY NL

NOTES:

1. Use existing parts and hardware.

54" Deck Adapter



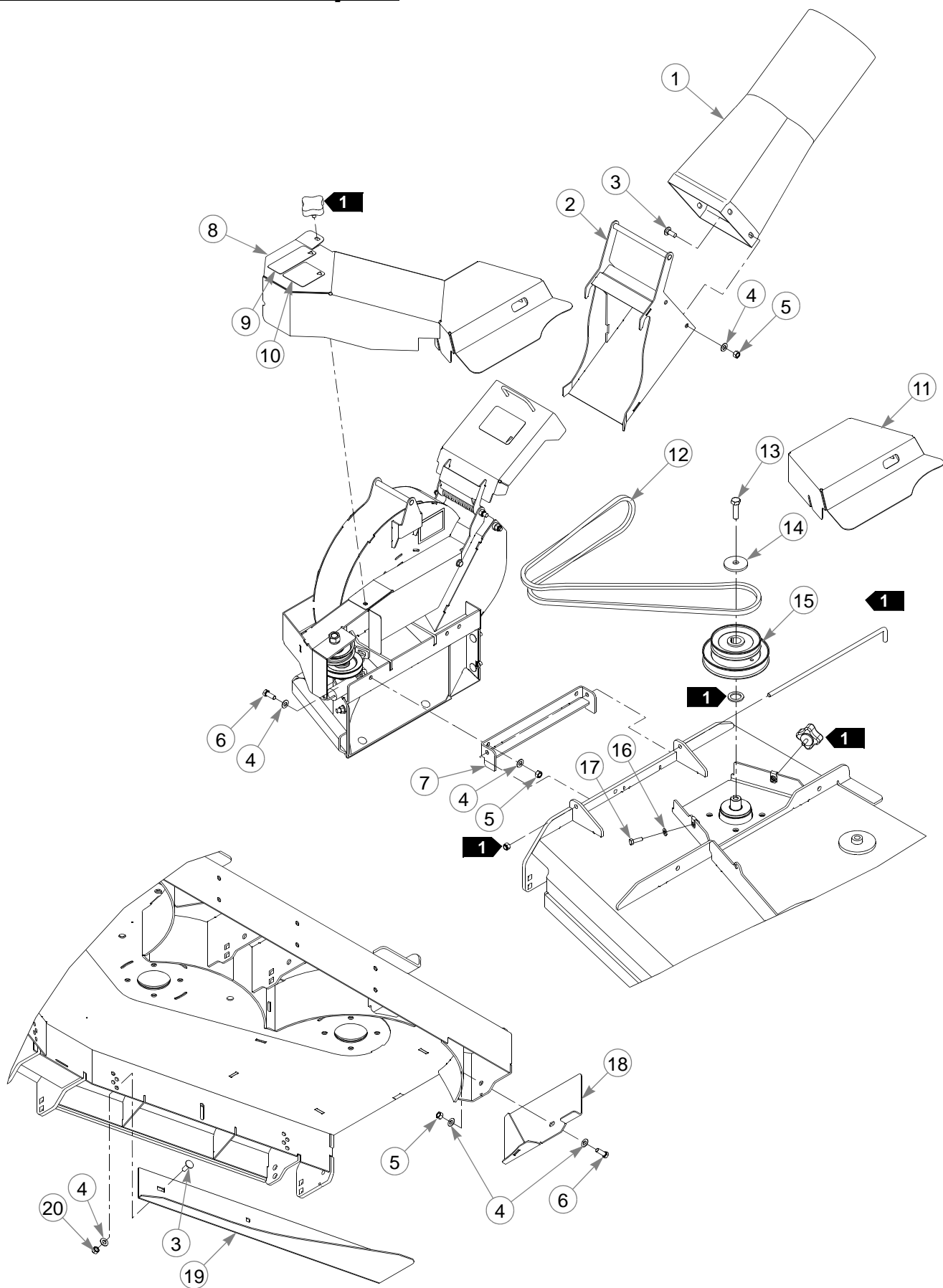
54" Deck Adapter

INDEX NO.	PART NO.	QTY.	DESCRIPTION
1	603213	1	BLOWER OUTLET TUBE
2	114066	1	OUTLET ADAPTER
3	025395	6	CB .375-16 X 1.00 G5 ZNY
4	767954	12	FW .406 X .812 X .060 SAE
5	054502	7	NT .375-16 HX GRD 5 ZNY
6	036244	3	CS .375-16 X 1.000 HX G5
7	114194	1	BLOWER MOUNT
8	551035	1	54" BLOWER BELT COVER W/ DECALS
9	601624	1	DISCHARGE CHUTE DECAL
10	601837	1	DECK DANGERS DECAL
11	603319	1	BELT, A 103.0" EL
12	017616	1	CS .500-13 X 1.750 HX G5
13	752386	1	CW .515 X 2.25 X .204 BLK
14	603310	1	54" DOUBLE DRIVE
15	114389	1	54" BELT COVER BRACKET
16	601069	1	CN .312-18 X .200 MAX THK
17	792002	1	KNOB 5/16-18 X 3/4"
18	114071	1	54" BLOWER BAFFLE
19	114360	1	RS 54" BLOWER BAFFLE
20	086660	2	NT .375-16 HXZY NL

NOTES:

1. Use existing parts and hardware.

60" X-ONE Deck Adapter



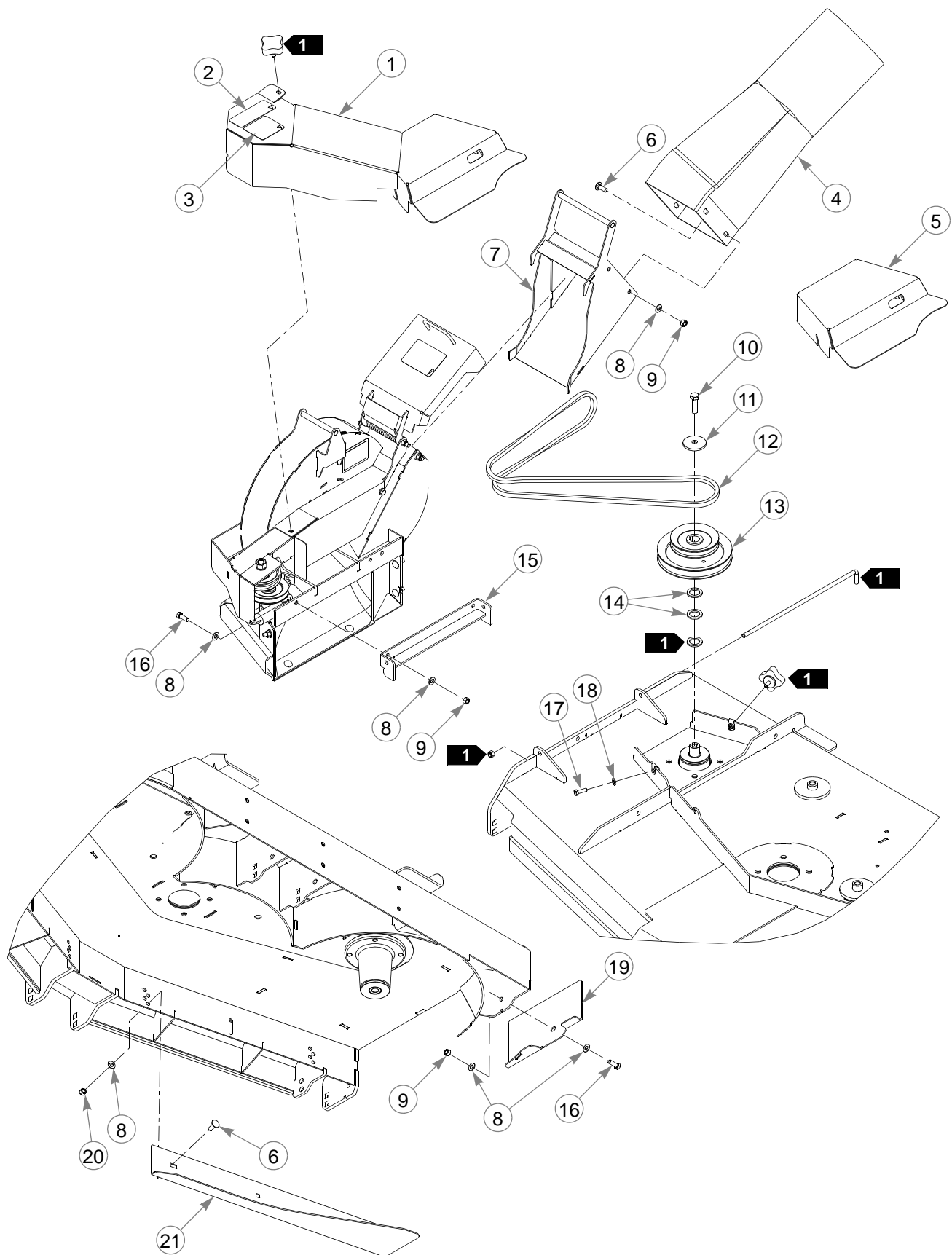
60" X-ONE Deck Adapter

INDEX NO.	PART NO.	QTY.	DESCRIPTION
1	603213	1	BLOWER OUTLET TUBE
2	114066	1	OUTLET ADAPTER
3	025395	7	CB .375-16 X 1.00 G5 ZNY
4	767954	13	FW .406 X .812 X .060 SAE
5	054502	7	NT .375-16 HX GRD 5 ZNY
6	036244	3	CS .375-16 X 1.000 HX G5
7	113118	1	BLOWER MOUNT
8	551036	1	60" BLOWER BELT COVER (WITH DECALS)
9	601624	1	DISCHARGE CHUTE DECAL
10	601837	1	DECK DANGERS DECAL
11	114810	1	DOUBLE PULLEY COVER
12	602996	1	BELT, A 83.0" EL
13	017616	1	CS .500-13 X 1.750 HX G5
14	752386	1	CW .515 X 2.25 X .204 BLK
15	603311	1	60" DOUBLE DRIVE
16	768523	1	FW .343 X .687 X .051/.080H
17	036236	1	CS .312-18 X 1.000 HX G5
18	113127	1	60" BLOWER BAFFLE
19	114361	1	RS BLOWOUT BAFFLE
20	086660	3	NT .375-16 HXZY NL

NOTES:

1. Use existing parts and hardware.

60" SZ Deck Adapter



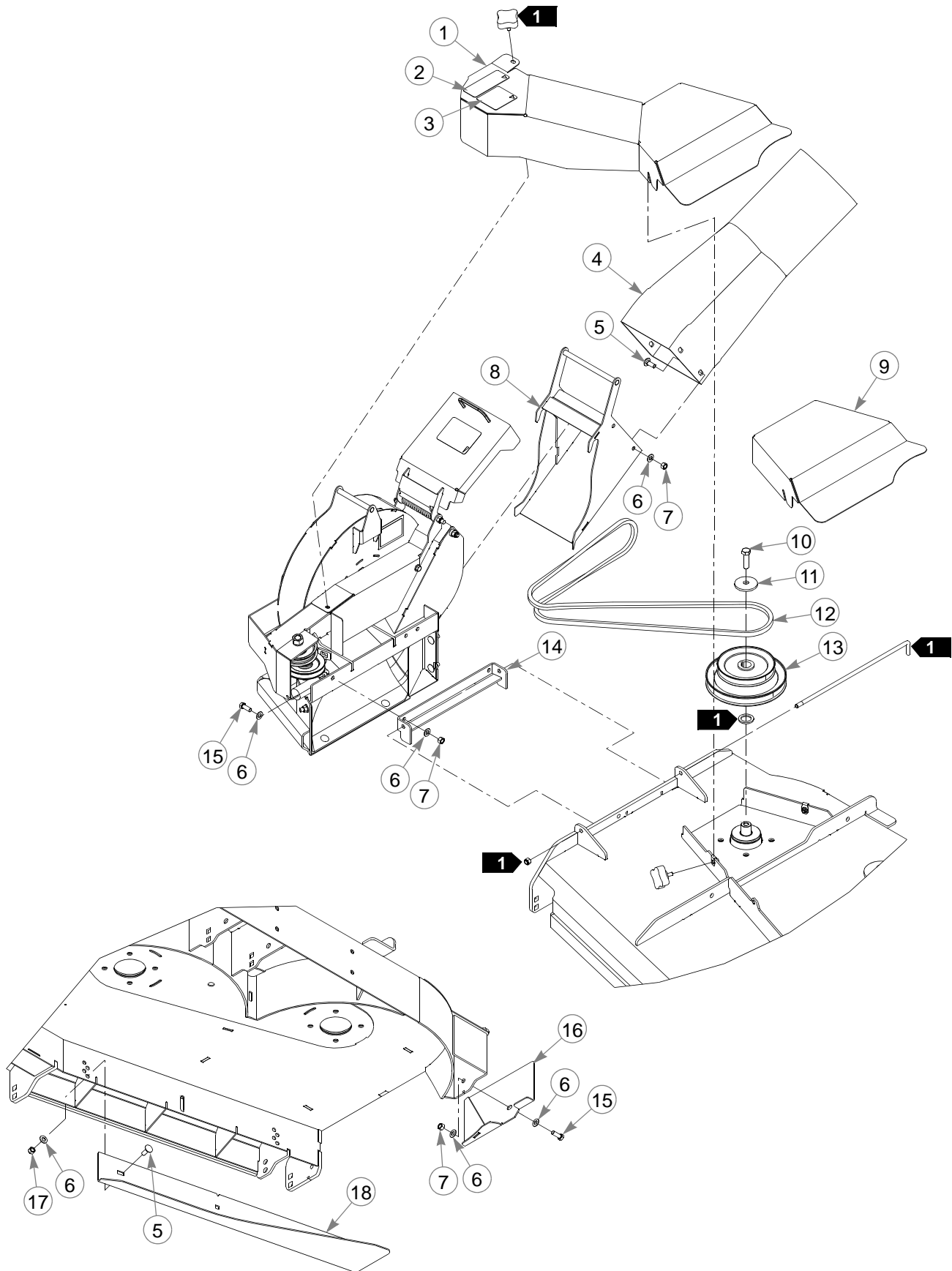
60" SZ Deck Adapter

INDEX NO.	PART NO.	QTY.	DESCRIPTION
1	551036	1	60" BLOWER BELT COVER (WITH DECALS)
2	601624	1	DISCHARGE CHUTE DECAL
3	601837	1	DECK DANGERS DECAL
4	603324	1	BLOWER OUTLET TUBE
5	114810	1	DOUBLE PULLEY COVER
6	025395	7	CB .375-16 X 1.00 G5 ZNY
7	114066	1	OUTLET ADAPTER
8	767954	13	FW .406 X .812 X .060 SAE
9	054502	7	NT .375-16 HX GRD 5 ZNY
10	017616	1	CS .500-13 X 1.750 HX G5
11	752386	1	CW .515 X 2.25 X .204 BLK
12	602996	1	BELT, A 83.0" EL
13	602914	1	60" DOUBLE PULLEY
14	045765	2	FW 1.030 X 1.500 X .134 ZN
15	113118	1	BLOWER MOUNT
16	036244	3	CS .375-16 X 1.000 HX G5
17	036236	1	CS .312-18 X 1.000 HX G5
18	768523	1	FW .343 X .687 X .051/.080H
19	113127	1	60" BLOWER BAFFLE
20	086660	3	NT .375-16 HXZY NL
21	114361	1	RS 60" BLOWOUT BAFFLE

NOTES:

1. Use existing parts and hardware.

66" Deck Adapter



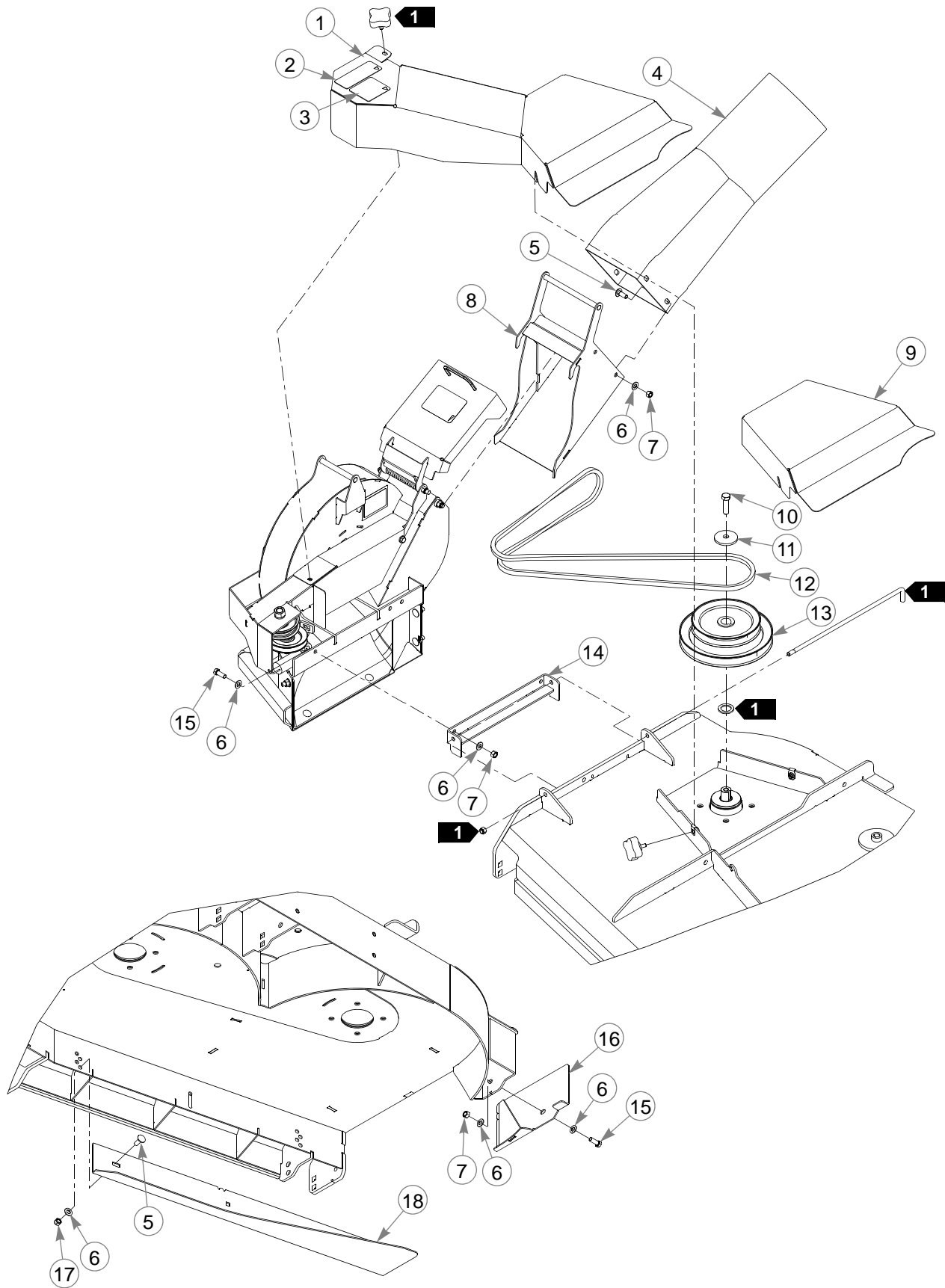
66" Deck Adapter

INDEX NO.	PART NO.	QTY.	DESCRIPTION
1	551037	1	66" BELT COVER W/ DECALS
2	601624	1	DISCHARGE CHUTE DECAL
3	601837	1	DECK DANGERS DECAL
4	603324	1	BLOWER OUTLET TUBE
5	025395	7	CB .375-16 X 1.00 G5 ZNY
6	767954	13	FW .406 X .812 X .060 SAE
7	054502	7	NT .375-16 HX GRD 5 ZNY
8	114066	1	OUTLET ADAPTER
9	114349	1	66" DBL PULLEY COVER
10	017616	1	CS .500-13 X 1.750 HX G5
11	752386	1	CW .515 X 2.25 X .204 BLK
12	602997	1	BELT, A 86.0" EL
13	603312	1	66" DOUBLE DRIVE
14	113118	1	BLOWER MOUNT
15	036244	3	CS .375-16 X 1.000 HX G5
16	114074	1	66" BLOWER BAFFLE
17	086660	3	NT .375-16 HXZY NL
18	114362	1	RS 66" BLOWOUT BAFFLE

NOTES:

1. Use existing parts and hardware.

72" Deck Adapter

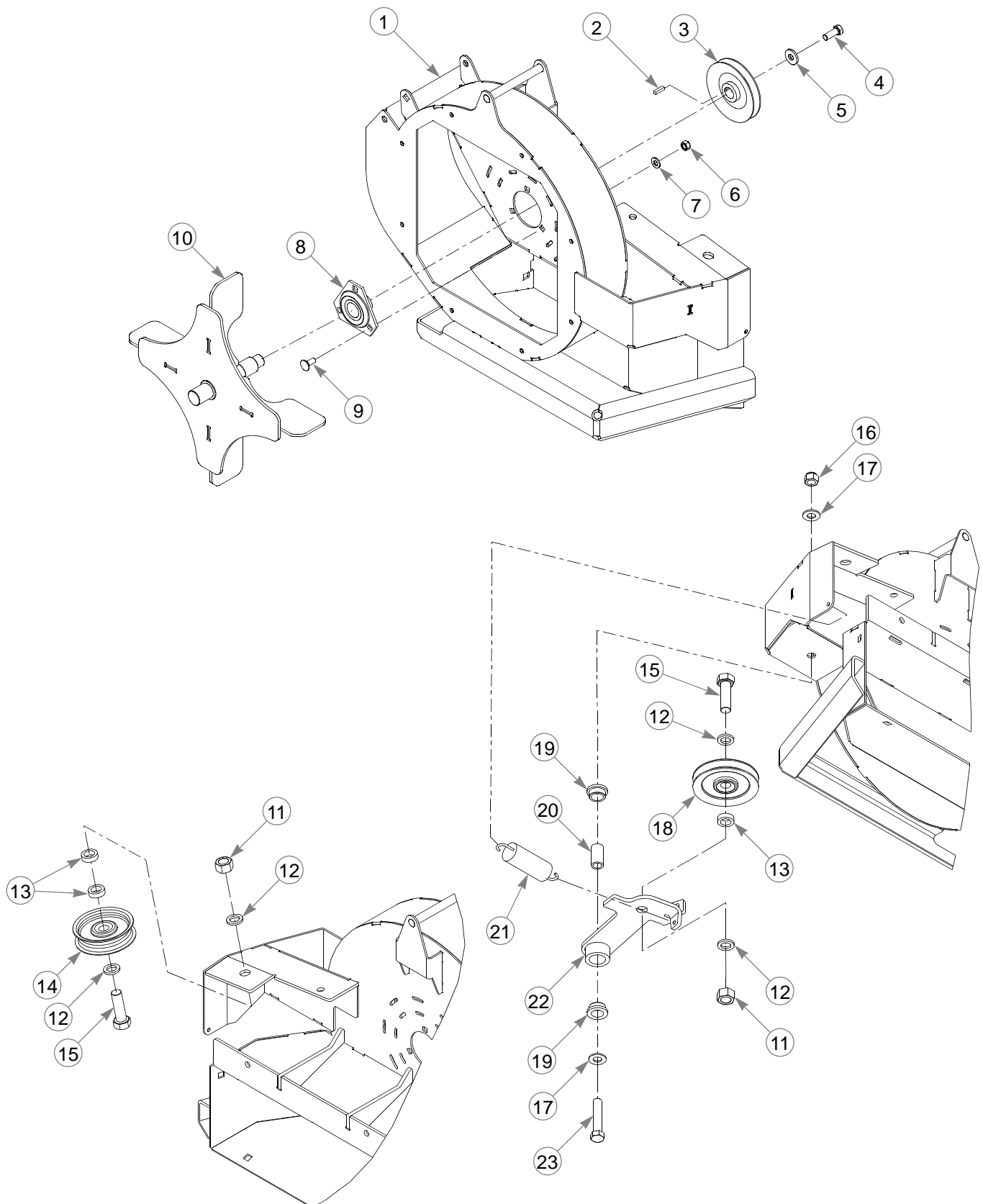


72" Deck Adapter

INDEX NO.	PART NO.	QTY.	DESCRIPTION
1	551038	1	72" BELT COVER W/ DECALS
2	601624	1	DISCHARGE CHUTE DECAL
3	601837	1	DECK DANGERS DECAL
4	603324	1	BLOWER OUTLET TUBE
5	025395	7	CB .375-16 X 1.00 G5 ZNY
6	767954	13	FW .406 X .812 X .060 SAE
7	054502	7	NT .375-16 HX GRD 5 ZNY
8	114066	1	OUTLET ADAPTER
9	114350	1	72" DBL PULLEY COVER
10	017616	1	CS .500-13 X 1.750 HX G5
11	752386	1	CW .515 X 2.25 X .204 BLK
12	602998	1	BELT, A 89.0" EL
13	603313	1	72" DOUBLE DRIVE
14	113118	1	BLOWER MOUNT
15	036244	3	CS .375-16 X 1.000 HX G5
16	114077	1	72" BLOWER BAFFLE
17	086660	3	NT .375-16 HXZY NL
18	114363	1	RS 72" BLOWOUT BAFFLE

NOTES:

1. Use existing parts and hardware.

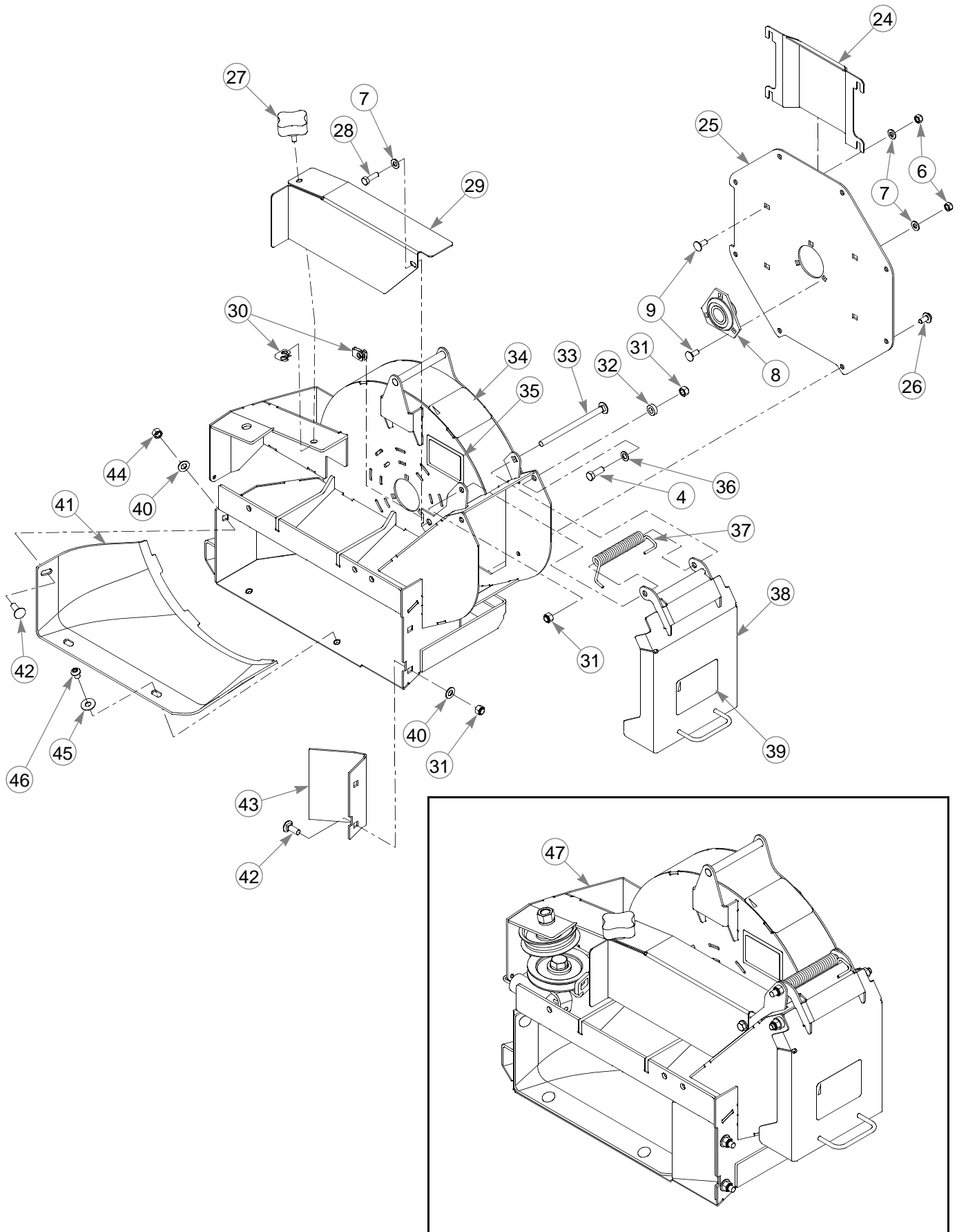


Blower

INDEX NO.	PART NO.	QTY.	DESCRIPTION
1	N/A	1	BLOWER HOUSING
2	322529	1	KEY .187 SQ X .750 LONG
3	602912	1	PULLEY
4	036244	3	CS .375-16 X 1.000 HX G5
5	712919	1	FW .406 X 1.00 X.12 HRD Z
6	058776	10	NT .312-18 HXZY NL
7	768523	11	FW .343 X .687 X .051/.080H
8	602661	2	BEARING FLANGE 1.00"
9	016253	10	CB .312-18 X .750 FUL ZN
10	113120	1	BLOWER IMPELLER
11	016972	2	NT .625-11 HX G5 ZNYC
12	028118	4	FW .625 X 1.00 X .134 ZNYC
13	600296	3	DECK IDLER SPACER
14	791566	1	IDLER PULLEY 3.25" OD X .6
15	016642	2	CS .625-11 X 2.00 HX G5 Z
16	781567	1	NT .500-13 HX G8 ZY NL
17	767962	2	FW .531 X 1.063 X .090 SAE
18	602913	1	V-IDLER PULLEY
19	770867	2	BUSHING
20	109549	1	BUSHING
21	036384	1	SPRING 1/4 COIL PL 1.23
22	113406	1	BLOWER IDLER ARM
23	008573	1	CS .500-13X2.500 HX G5

NOTES:

Blower

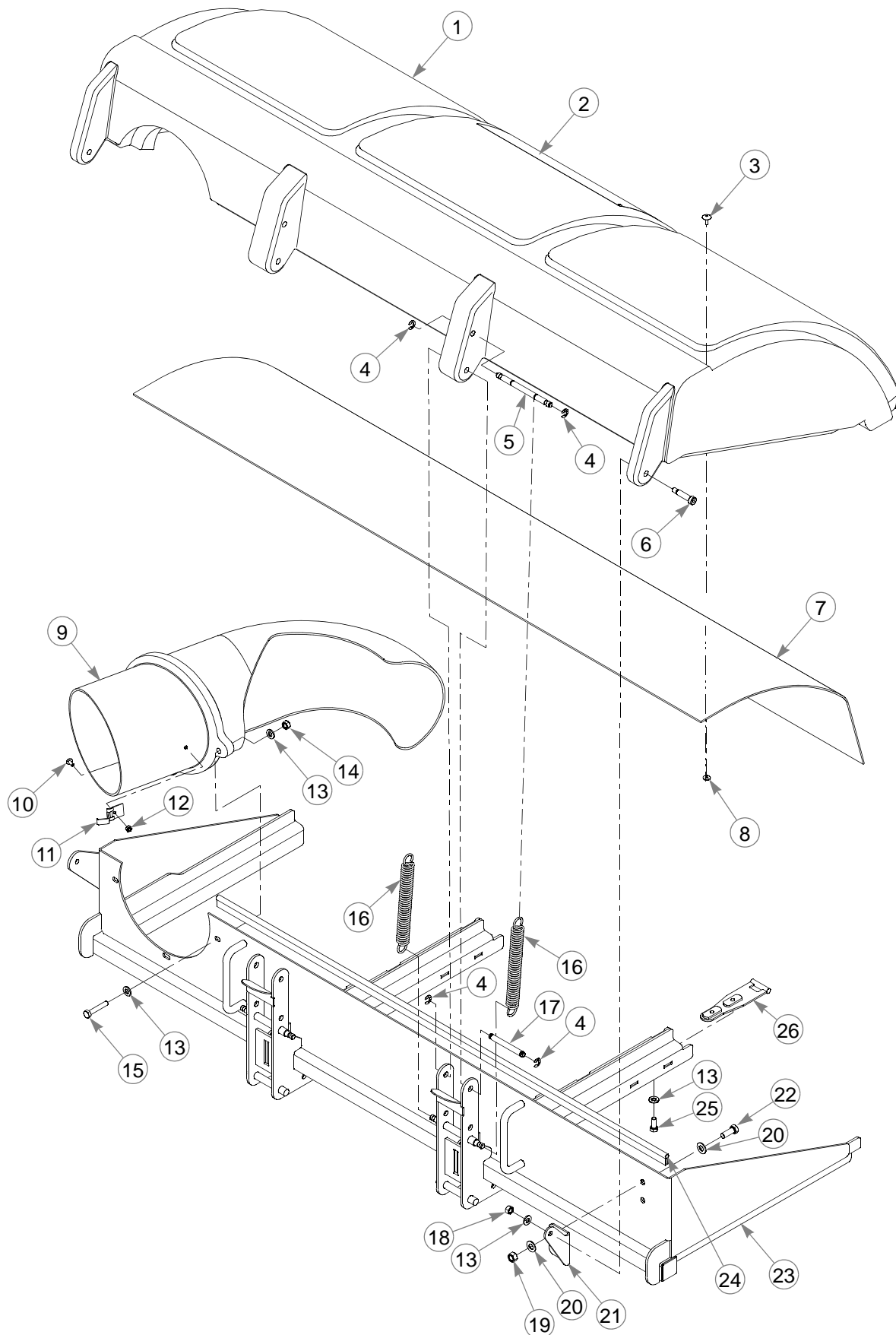


Blower

INDEX NO.	PART NO.	QTY.	DESCRIPTION
24	114337	1	BEARING COVER
25	113119	1	BLOWER COVER
26	799130	8	CS .312-18 X .500 HXFL
27	792002	1	KNOB 5/16-18 X 3/4"
28	036236	1	CS .312-18 X 1.000 HX G5
29	114338	1	DRIVEN PULLEY COVER
30	601069	2	CN .312-18 X .200 MAX THK
31	086660	5	NT .375-16 HXZY NL
32	073858	2	FW .406 X .750 X .250 ZNYC
33	602674	1	CB .375-16 X 6.00 STD
34	602757	1	BLOWER DANGERS DECAL
35	083279	1	TURF PRODUCTS SERIAL NO. PLATE
36	704718	2	FW .406 X .688 X .060 ZNYC
37	602435	1	TORSION SPRING
38	550995	1	BLOWER LID (WITH DECALS)
39	602758	1	EYES/EARS/FOOT DECAL
40	767954	3	FW .406 X .812 X .060 SAE
41	603191	1	BLOWER CHUTE INLET
42	025395	3	CB .375-16 X 1.00 G5 ZNY
43	113128	1	BLOWER INLET BAFFLE
44	054502	1	NT .375-16 HX GRD 5 ZNY
45	076422	2	FW .406 X 1.000 X .06 ZNYC
46	774919	2	CS .375-16 X .500 SOC BH
47	550996	1	BLOWER F/A

NOTES:

Catcher Frame

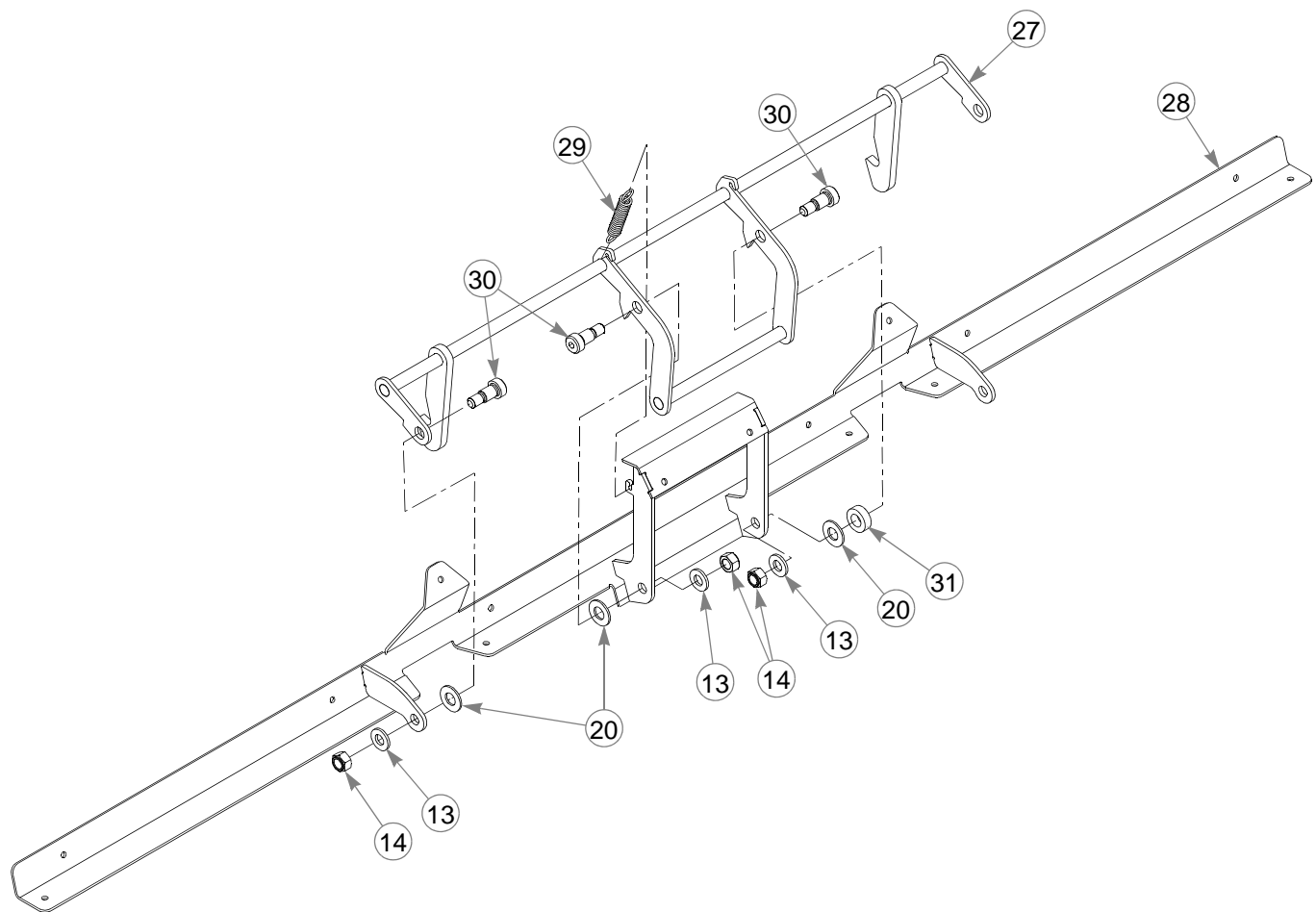


Catcher Frame

INDEX NO.	PART NO.	QTY.	DESCRIPTION
1	603225	1	LID
2	603419	1	CATCHER DECAL
3	603398	24	RIVET
4	603332	8	CLIP
5	114249	2	SPRING LID PIN
6	603333	2	SB .375 X 1.25 SH .312-18
7	603353	1	SCREEN
8	603400	10	FW .188" X .50" X .060
9	603214	1	INLET TUBE
10	060723	1	MS #10-24 X .500 TH SL
11	602830	1	SNAP FASTENER
12	059832	1	NT #10-24 HX NL ZN
13	768523	16	FW .343 X .687 X .051/.080H
14	058776	7	NT .312-18 HXZY NL
15	050161	3	CS .312-18 X 1.750 HX G5
16	603285	4	LID HINGE SPRING
17	114248	2	LID HINGE PIN
18	034272	2	NT .312-18 HX G5 ZNYC
19	054502	2	NT .375-16 HX GRD 5 ZNY
20	767954	8	FW .406 X .812 X .060 SAE
21	114118	1	LID ADJUST BRACKET
22	036244	2	CS .375-16 X 1.000 HX G5
23	113640	1	3 BAG CATCHER FRAME
24	603418	1	LID SEAL
25	034280	4	CS .312-18 X .750 HX G5
26	114230	2	LID CATCH

NOTES:

Catcher Frame



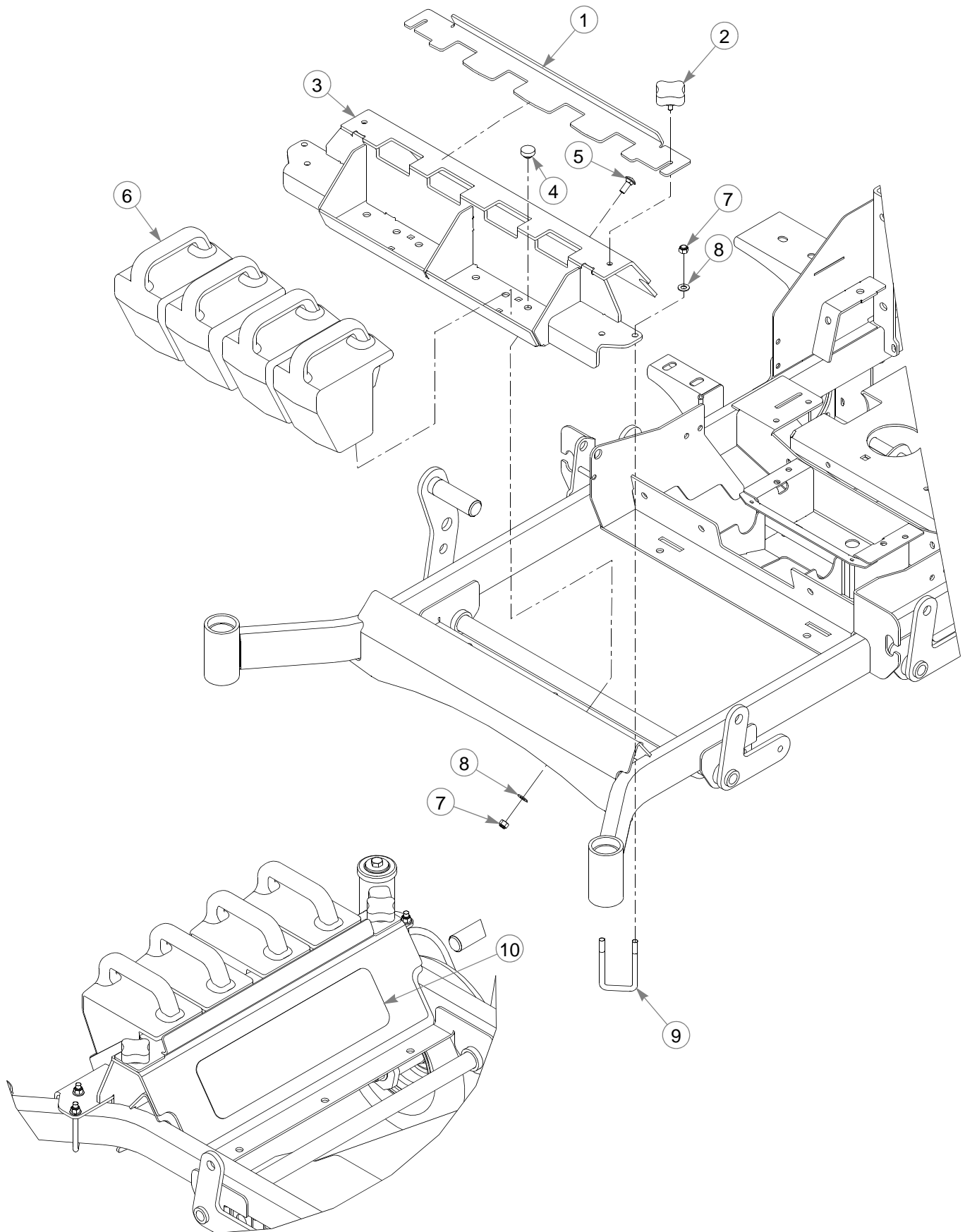
VIEWED FROM
UNDERNEATH

Catcher Frame

INDEX NO.	PART NO.	QTY.	DESCRIPTION
27	113794	1	LID CATCH
28	114399	1	LID INSERT
29	603358	2	LID LATCH SPRING
30	063297	4	SB .375 X .500 SH .312-1
31	073858	1	FW .406 X .750 X .250 ZNYC

NOTES:

Catcher Frame Adapter — Super Z

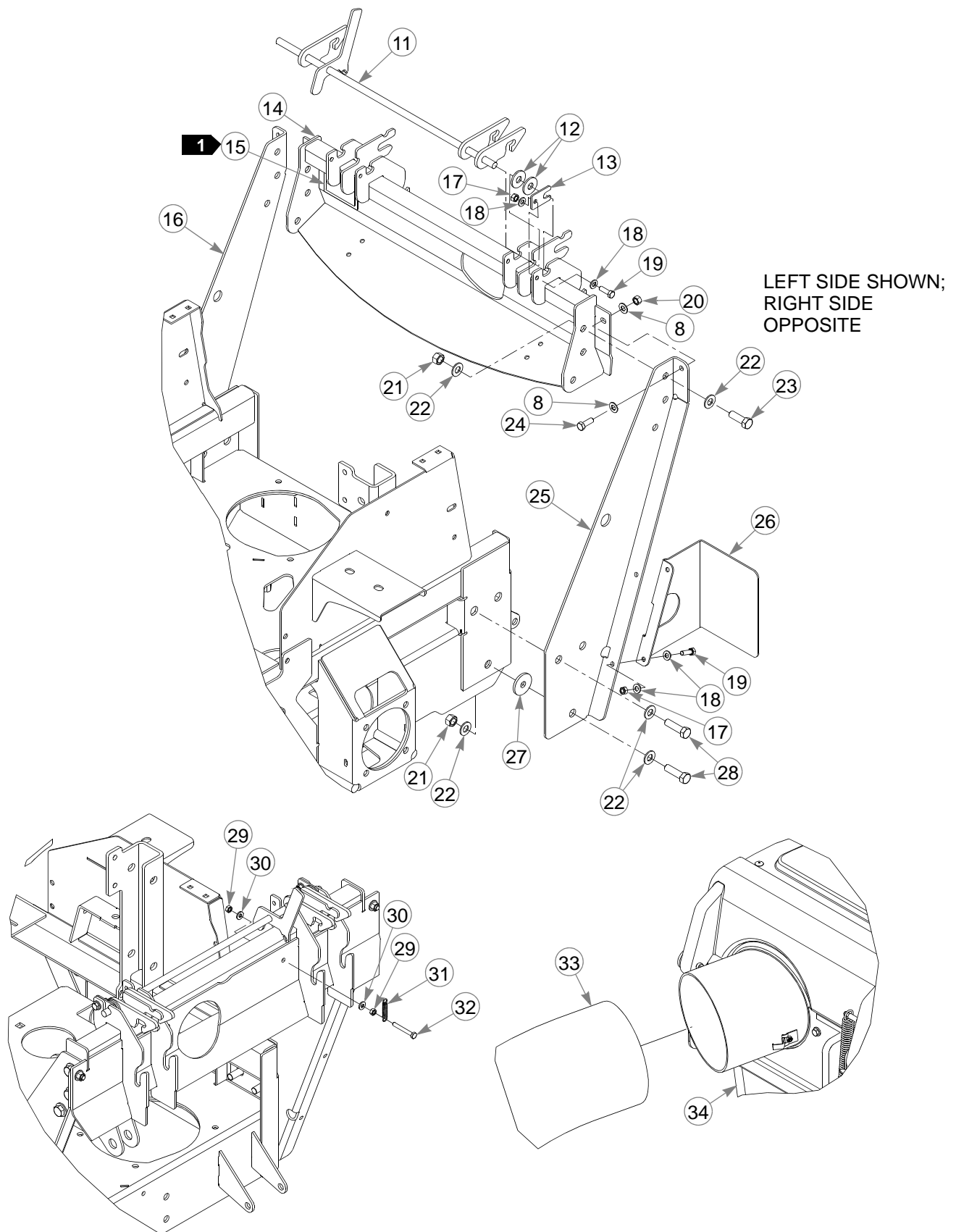


Catcher Frame Adapter — Super Z

INDEX NO.	PART NO.	QTY.	DESCRIPTION
1	114323	1	WEIGHT LOCK PLATE
2	792002	2	KNOB 5/16-18 X 3/4"
3	114317	1	WEIGHT MOUNT
4	781880	8	BUMPER
5	025395	2	CB .375-16 X 1.00 G5 ZNY
6	603207	4	WEIGHT
7	086660	6	NT .375-16 HXZY NL
8	767954	10	FW .406 X .812 X .060 SAE
9	603340	2	UB .375-16 X 2.00 X 4.00 SQ
10	602323	1	STEP TREAD

NOTES:

Catcher Frame Adapter — Super Z



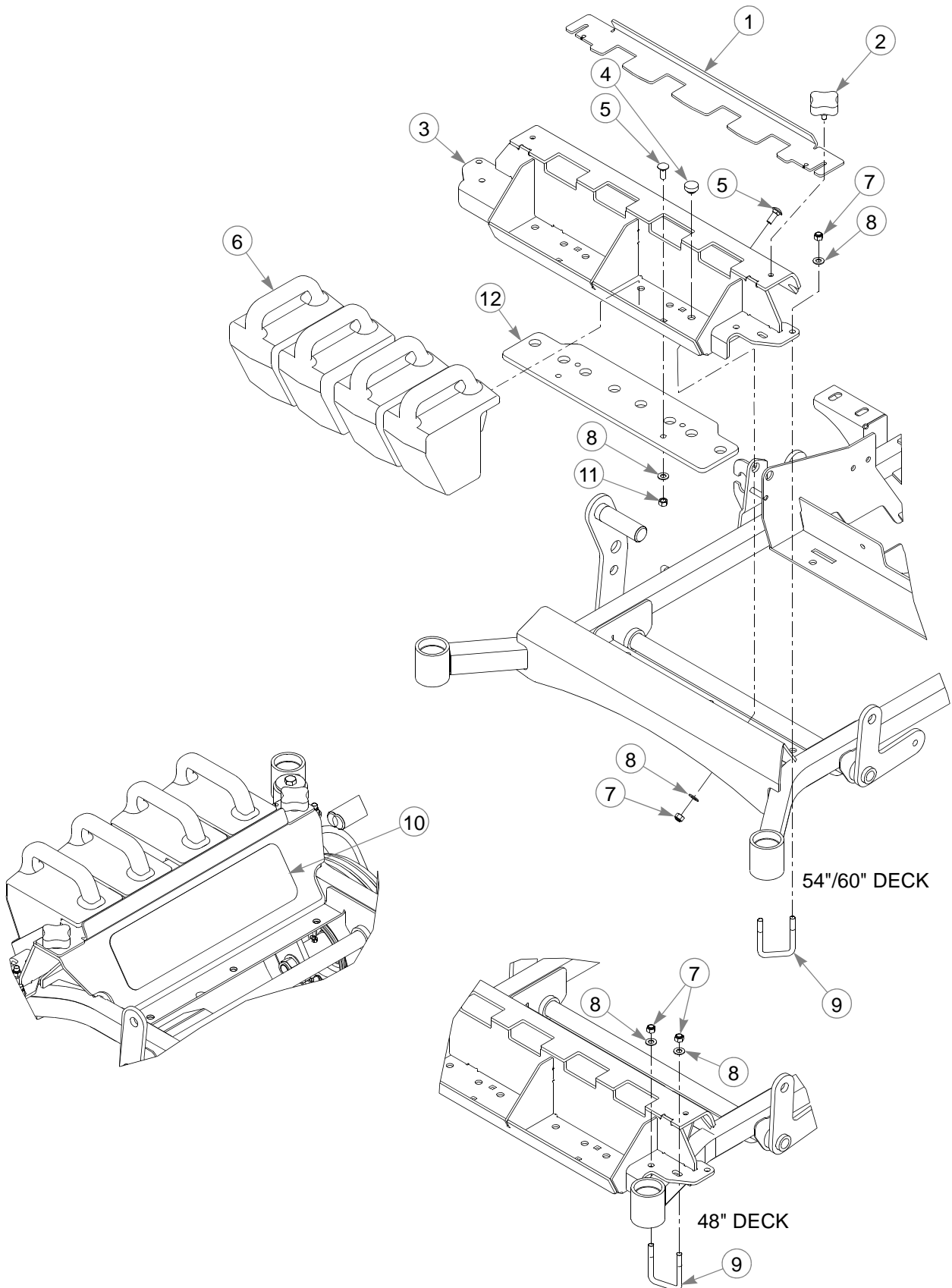
Catcher Frame Adapter — Super Z

INDEX NO.	PART NO.	QTY.	DESCRIPTION
11	113965	1	LID MOUNT LATCH
12	712976	4	FW .531 X 1.375 X .125 ZNY
13	113969	2	KEEPER LATCH
14	551055	1	PIVOT MOUNT W/ SERIAL PLATE
15	N/A	1	SERIAL NO. PLATE
16	113781	1	MOUNT, RS
17	034272	4	NT .312-18 HX G5 ZNYC
18	768523	8	FW .343 X .687 X .051/.080H
19	036236	4	CS .312-18 X 1.000 HX G5
20	054502	2	NT .375-16 HX GRD 5 ZNY
21	008193	8	NT .500-13 HX G5 ZNYC
22	767962	20	FW .531 X 1.063 X .090 SAE
23	074252	6	CS .500-13 X 1.500 HX G5
24	036244	2	CS .375-16 X 1.000 HX G5
25	113782	1	MOUNT, LS
26	114259	1	BAG GUARD
27	078386	2	FW .510 X 1.750 X .18 ZNYC
28	017616	6	CS .500-13 X 1.750 HX G5
29	024927	2	NT .250-20 HX GR.5 ZNYC
30	768515	2	FW .281 X .625 X .051/.080H
31	603358	1	LID LATCH SPRING
32	704163	1	CS .250-20 X 2.00 HX G5 Z
33	603356	1	FLEX TUBE
34	603127	3	CATCHER BAG

NOTES:

2. In the event the serial number tag becomes damaged or illegible, please contact your dealer to order a replacement.

Catcher Frame Adapter — X-ONE

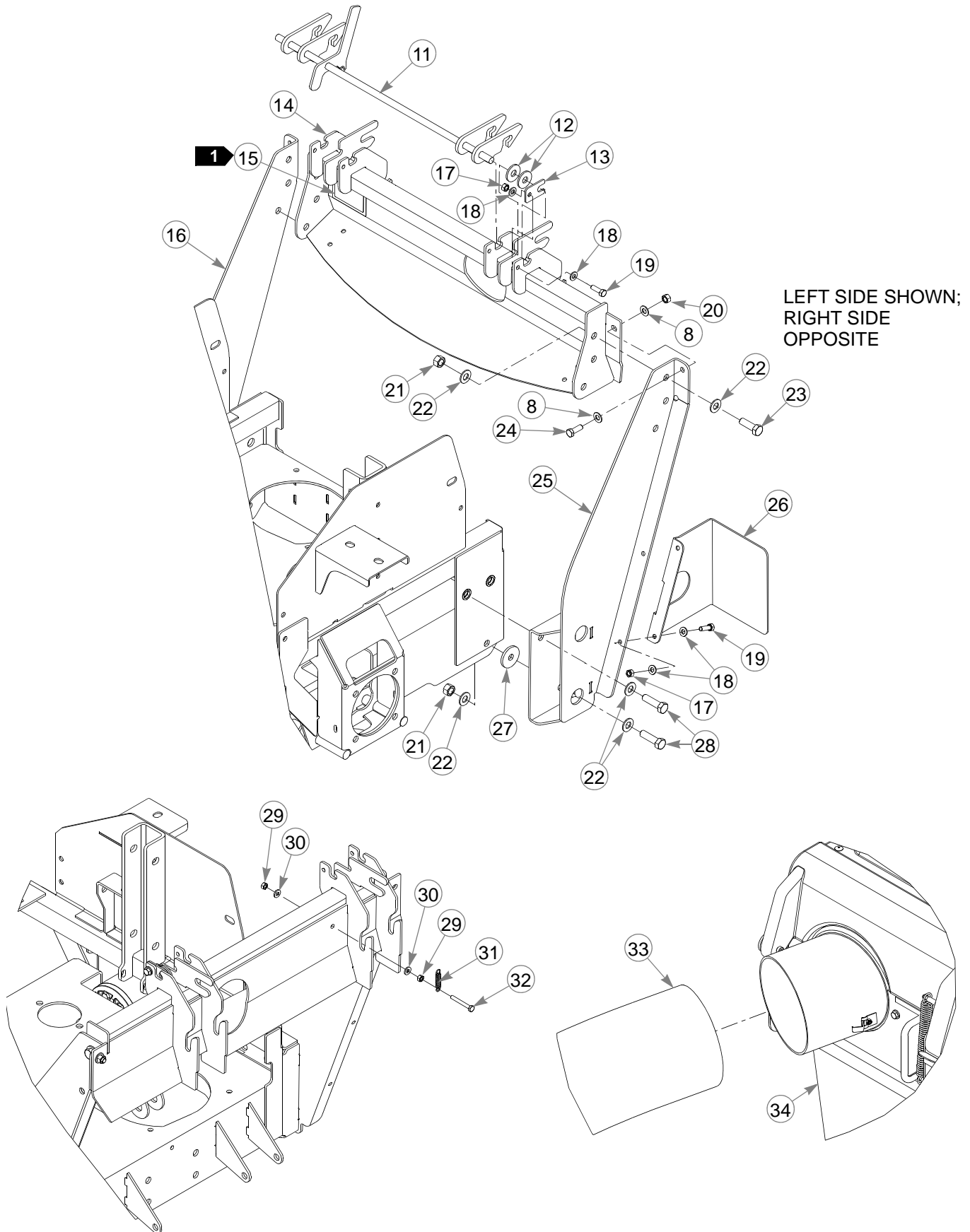


Catcher Frame Adapter— X-ONE

INDEX NO.	PART NO.	QTY.	DESCRIPTION
1	114323	1	WEIGHT LOCK PLATE
2	792002	2	KNOB 5/16-18 X 3/4"
3	114327	1	WEIGHT MOUNT
4	781880	8	BUMPER
5	025395	6	CB .375-16 X 1.00 G5 ZNY
6	603207	4	WEIGHT
7	086660	6	NT .375-16 HXZY NL
8	767954	14	FW .406 X .812 X .060 SAE
9	603339	2	UB .375-16 X 2.00 X 3.00 SQ
10	602323	1	STEP TREAD
11	054502	4	NT .375-16 HX G5 ZN
12	114661	1	AUX WEIGHT PLATE, 10 LB.

NOTES:

Catcher Frame Adapter— X-ONE



Catcher Frame Adapter—X-ONE

INDEX NO.	PART NO.	QTY.	DESCRIPTION
11	113965	1	LID MOUNT LATCH
12	712976	4	FW .531 X 1.375 X .125 ZNY
13	113969	2	KEEPER LATCH
14	551054	1	PIVOT MOUNT W/ SERIAL PLATE
15	N/A	1	SERIAL NO. PLATE
16	114168	1	MOUNT, RS
17	034272	4	NT .312-18 HX G5 ZNYC
18	768523	8	FW .343 X .687 X .051/.080H
19	036236	4	CS .312-18 X 1.000 HX G5
20	054502	2	NT .375-16 HX GRD 5 ZNY
21	008193	8	NT .500-13 HX G5 ZNYC
22	767962	20	FW .531 X 1.063 X .090 SAE
23	074252	6	CS .500-13 X 1.500 HX G5
24	036244	2	CS .375-16 X 1.000 HX G5
25	114169	1	MOUNT, LS
26	114259	1	BAG GUARD
27	078386	2	FW .510 X 1.750 X .18 ZNYC
28	017616	6	CS .500-13 X 1.750 HX G5
29	024927	2	NT .250-20 HX GR.5 ZNYC
30	768515	2	FW .281 X .625 X .051/.080H
31	603358	1	LID LATCH SPRING
32	704163	1	CS .250-20 X 2.00 HX G5 Z
33	603357	1	FLEX TUBE
34	603127	3	CATCHER BAG

3. In the event the serial number tag becomes damaged or illegible, please contact your dealer to order a replacement.

INDEX

	PAGE		PAGE
Accessories	1-1	028118	6-15
Blower drive belt	5-1	034272	3-10, 6-19, 6-25, 6-29
Blower Housing & Transfer Tube	5-1	034280	6-19
Blower impeller	5-2	036236	3-4, 3-5, 3-10, 6-7, 6-9, 6-17, 6-25, 6-29
Catcher Hood Assembly	3-10	036244	3-3, 3-4, 3-5, 3-6, 3-7, 3-10, 6-3, 6-5, 6-7, 6-9, 6-11, 6-13, 6-15, 6-19, 6-25, 6-29
Converting to side discharge mode.....	4-1	036384	6-15
Deck adapter kits	3-1	045765	3-5, 6-9
Final Connection	3-8	050161	6-19
Lid latch adjustment.....	5-2	054502	3-3, 3-4, 3-5, 3-6, 3-7, 3-10, 6-3, 6-5, 6-7, 6-9, 6-11, 6-13, 6-17, 6-19, 6-25, 6-27, 6-29
Mower deck preparation.....	3-1	058776	6-15, 6-19
Mower Preparation	3-8	059832	6-19
Packing list - Catcher	3-1	060723	6-19
Parts and service	1-1	063297	6-21
Removing the lid assembly	4-2	073858	6-17, 6-21
Storage	5-2	074252	3-10, 6-25, 6-29
To the new owner	1-1	076422	6-17
Unloading the Catcher.....	4-1	078386	6-25, 6-29
Using this manual	1-1	083279	6-17
Vacuum Pickup and Collection	4-1	086660	3-3, 3-4, 3-5, 3-6, 3-7, 3-11, 6-3, 6-5, 6-7, 6-9, 6-11, 6-13, 6-17, 6-23, 6-27
Warranty registration	1-1	109549	6-15
Weight Assembly	3-11	113118	3-5, 3-6, 3-7, 6-7, 6-9, 6-11, 6-13
008193.....	3-10, 6-25, 6-29	113119	6-17
008573.....	6-15	113120	6-15
016253.....	6-15		
016642.....	6-15		
016972.....	6-15		
017616.....	3-3, 3-4, 3-5, 3-6, 3-7, 3-10, 6-3, 6-5, 6-7, 6-9, 6-11, 6-13, 6-25, 6-29		
024927	6-25, 6-29		
025395.....	3-3, 3-4, 3-5, 3-6, 3-7, 3-11, 6-3, 6-5, 6-7, 6-9, 6-11, 6-13, 6-17, 6-23, 6-27		

	PAGE
113127	3-4, 3-5, 6-7, 6-9
113128	6-17
113188	3-4
113406	6-15
113640	6-19
113780	3-10
113781	3-10, 6-25
113782	3-10, 6-25
113794	6-21
113900	3-1
113900 & 113901 Adapter Assembly ..	3-3
113901	3-1
113902	3-1
113902 Adapter Assembly	3-4
113903	3-1
113903 Adapter Assembly	3-5
113904	3-1
113904 Adapter Assembly	3-6
113905	3-1
113905 Adapter Assembly	3-7
113965	6-25, 6-29
113969	6-25, 6-29
114066	3-3, 3-4, 3-5, 3-6, 3-7, 6-3, 6-5, 6-7, 6-9, 6-11, 6-13
114068	3-3, 6-3
114071	3-3, 6-5
114074	3-6, 6-11
114077	3-7, 6-13
114168	3-10, 6-29
114169	3-10, 6-29
114194	3-3, 6-3, 6-5
114230	6-19
114248	6-19

	PAGE
114249	6-19
114259	3-10, 6-25, 6-29
114317	3-11, 6-23
114323	3-11, 6-23, 6-27
114327	3-11, 6-27
114337	6-17
114338	6-17
114349	3-6, 6-11
114350	3-7, 6-13
114359	3-3, 3-4, 6-3
114360	3-3, 6-5
114361	3-5, 6-7, 6-9
114362	3-6, 6-11
114363	3-7, 6-13
114388	3-3, 6-3
114389	3-3, 6-5
114399	6-21
114661	6-27
114810	3-4, 3-5, 6-7, 6-9
322529	6-15
550811	3-1
550835	3-1
550836	3-1
550837	3-1
550995	6-17
550996	6-17
551034	3-3, 6-3
551035	3-3, 6-5
551036	3-4, 3-5, 6-7, 6-9
551037	3-6, 6-11
551038	3-7, 6-13
551054	6-29
551055	3-10, 6-25
600296	6-15

INDEX

	PAGE		PAGE
601069.....	3-3, 6-3, 6-5, 6-17	603332.....	6-19
601624.....	6-3, 6-5, 6-7, 6-9, 6-11, 6-13	603333.....	6-19
601837.....	6-3, 6-5, 6-7, 6-9, 6-11, 6-13	603339.....	3-11, 6-27
602323.....	6-23, 6-27	603340.....	3-11, 6-23
602435.....	6-17	603356.....	6-25
602661.....	6-15	603357.....	6-29
602674.....	6-17	603358.....	6-21, 6-25, 6-29
602757.....	6-17	603398.....	6-19
602758.....	6-17	603400.....	6-19
602830.....	6-19	603419.....	6-19
602912.....	6-15	704163.....	6-25, 6-29
602913.....	6-15	704718.....	6-17
602914.....	3-5, 6-9	712919.....	6-15
602996.....	3-4, 3-5, 6-7, 6-9	712976.....	6-25, 6-29
602997.....	3-6, 6-11	752386.....	3-3, 3-4, 3-5, 3-6, 3-7, 6-3, 6-5, 6-7, 6-9, 6-11, 6-13
602998.....	3-7, 6-13	767954.....	3-3, 3-4, 3-5, 3-6, 3-7, 3-10, 3-11, 6-3, 6-5, 6-7, 6-9, 6-11, 6-13, 6-17, 6-19, 6-23, 6-27
603127.....	6-25, 6-29	767962.....	3-10, 6-15, 6-25, 6-29
603191.....	6-17	768515.....	6-25, 6-29
603207.....	3-11, 6-23, 6-27	768523.....	3-4, 3-5, 3-10, 6-7, 6-9, 6-15, 6-19, 6-25, 6-29
603213.....	3-3, 3-4, 6-3, 6-5, 6-7	770867.....	6-15
603225.....	6-19	774919.....	6-17
603285.....	6-19	781567.....	6-15
603309.....	3-3, 6-3	781880.....	3-11, 6-23, 6-27
603310.....	3-3, 6-5	791566.....	6-15
603311.....	3-4, 6-7	792002.....	3-3, 3-11, 6-3, 6-5, 6-17, 6-23, 6-27
603312.....	3-6, 6-11	799130.....	6-17
603313.....	3-7, 6-13		
603318.....	3-3, 6-3		
603319.....	3-3, 6-5		
603324.....	3-5, 3-6, 3-7, 6-9, 6-11, 6-13		